

For Research Use Only

# CD100 Recombinant antibody, PBS Only (Capture/Detector)

Catalog Number: 84465-3-PBS



## Basic Information

<b>Catalog Number:</b> 84465-3-PBS	<b>GenBank Accession Number:</b> BC054500	<b>Purification Method:</b> Protein A purification
<b>Size:</b> 1 mg/ml	<b>GeneID (NCBI):</b> 10507	<b>CloneNo.:</b> 241709D5
<b>Source:</b> Rabbit	<b>UNIPROT ID:</b> Q92854	
<b>Isotype:</b> IgG	<b>Full Name:</b> sema domain, immunoglobulin domain (Ig), transmembrane domain (TM) and short cytoplasmic domain, (semaphorin) 4D	
	<b>Calculated MW:</b> 96 kDa	

## Applications

**Tested Applications:**  
Cytometric bead array, Sandwich ELISA, Indirect ELISA, Sample test

**Species Specificity:**  
human

## Background Information

### Storage

**Storage:**  
Store at -80°C.  
**The product is shipped with ice packs. Upon receipt, store it immediately at -80°C**

**Storage Buffer:**  
PBS Only

For technical support and original validation data for this product please contact:

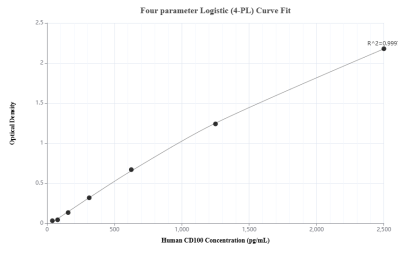
T: 4006900926

E: [Proteintech-CN@ptglab.com](mailto:Proteintech-CN@ptglab.com)

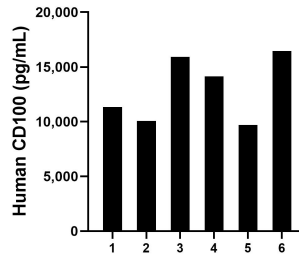
W: [ptgcn.com](http://ptgcn.com)

**This product is exclusively available under Proteintech Group brand and is not available to purchase from any other manufacturer.**

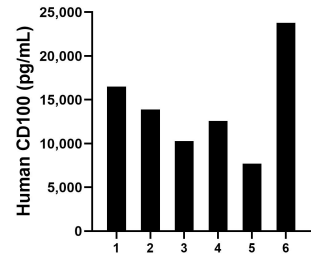
## Selected Validation Data



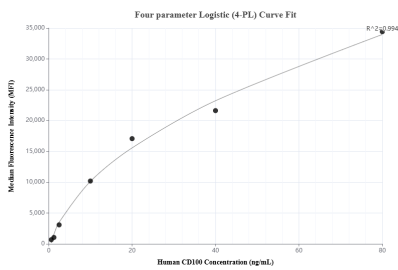
Sandwich ELISA standard curve of MP01337-3, Human CD100 Recombinant Matched Antibody Pair - PBS only. 84465-3-PBS was coated to a plate as the capture antibody and incubated with serial dilutions of standard RPO2354. 84465-6-PBS was HRP conjugated as the detection antibody. Range: 39.1-2500 pg/mL



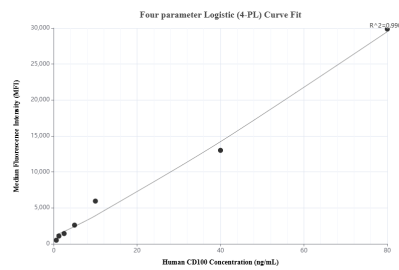
Plasma of six individual healthy human donors was measured. The human CD100 concentration of detected samples was determined to be 12,939.0 pg/mL with a range of 9,708.2 - 16,458.0 pg/mL



Serum of six individual healthy human donors was measured. The human CD100 concentration of detected samples was determined to be 14,122.6 pg/mL with a range of 7,698.6 - 23,788.0 pg/mL



Cytometric bead array standard curve of MP01337-1, CD100 Recombinant Matched Antibody Pair, PBS Only. Capture antibody: 84465-1-PBS. Detection antibody: 84465-3-PBS. Standard: RPO2354. Range: 0.625-80 ng/mL



Cytometric bead array standard curve of MP01337-2, CD100 Recombinant Matched Antibody Pair, PBS Only. Capture antibody: 84465-2-PBS. Detection antibody: 84465-3-PBS. Standard: RPO2354. Range: 0.625-80 ng/mL