

For Research Use Only

# CD100 Recombinant antibody, PBS Only (Detector)

Catalog Number:84465-6-PBS



## Basic Information

Catalog Number:

84465-6-PBS

Size:

1 mg/ml

Source:

Rabbit

Isotype:

IgG

GenBank Accession Number:

BC054500

GeneID (NCBI):

10507

UNIPROT ID:

Q92854

Full Name:

sema domain, immunoglobulin domain (Ig), transmembrane domain (TM) and short cytoplasmic domain, (semaphorin) 4D

Calculated MW:

96 kDa

Purification Method:

Protein A purification

CloneNo.:

241708F11

## Applications

Tested Applications:

Sandwich ELISA, Indirect ELISA, Sample test

Species Specificity:

human

## Background Information

### Storage

Storage:

Store at -80°C.

**The product is shipped with ice packs. Upon receipt, store it immediately at -80°C**

Storage Buffer:

PBS Only

For technical support and original validation data for this product please contact:

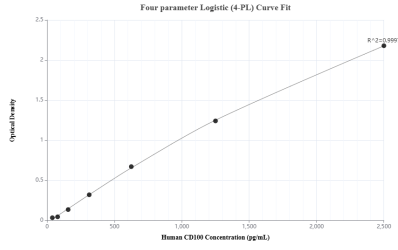
T: 4006900926

E: [Proteintech-CN@ptglab.com](mailto:Proteintech-CN@ptglab.com)

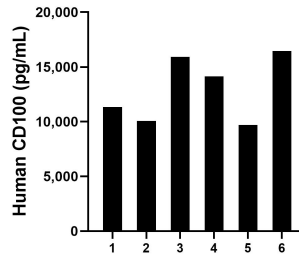
W: [ptgcn.com](http://ptgcn.com)

**This product is exclusively available under Proteintech Group brand and is not available to purchase from any other manufacturer.**

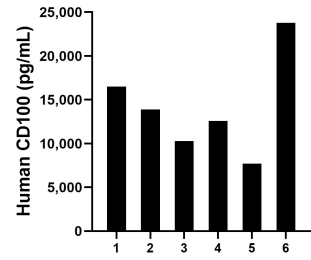
## Selected Validation Data



Sandwich ELISA standard curve of MP01337-3, Human CD100 Recombinant Matched Antibody Pair - PBS only. 84465-3-PBS was coated to a plate as the capture antibody and incubated with serial dilutions of standard RPO2354. 84465-6-PBS was HRP conjugated as the detection antibody. Range: 39.1-2500 pg/mL



Plasma of six individual healthy human donors was measured. The human CD100 concentration of detected samples was determined to be 12,939.0 pg/mL with a range of 9,708.2 - 16,458.0 pg/mL



Serum of six individual healthy human donors was measured. The human CD100 concentration of detected samples was determined to be 14,122.6 pg/mL with a range of 7,698.6 - 23,788.0 pg/mL