

For Research Use Only

IGFBP3 Recombinant antibody, PBS Only

Catalog Number: 84470-4-PBS



Basic Information

Catalog Number: 84470-4-PBS	GenBank Accession Number: NM_000598.5	Purification Method: Protein A purification
Size: 1 mg/ml	GeneID (NCBI): 3486	CloneNo.: 241723B3
Source: Rabbit	UNIPROT ID: P17936-1	
Isotype: IgG	Full Name: insulin-like growth factor binding protein 3	
	Calculated MW: 32 kDa	
	Observed MW: 32-37 kDa	

Applications

Tested Applications:
WB, Indirect ELISA

Species Specificity:
human

Background Information

Insulin-like growth factor binding protein-3 (IGFBP-3) contains a 27 amino acid putative signal sequence followed by a mature protein of 264 amino acids with 18 cysteine residues clustered near the N- and C-terminus. Accordingly, expression of the cloned IGFBP-3 cDNA in mammalian tissue culture cells results in secretion of the protein into the culture medium. IGFBP-3 shares high homology (33% amino acid identity) including conservation of all 18 cysteine residues with a smaller human IGF-binding protein (BP-28) identified in amniotic fluid. IGFBP-3 has one or more glycosylation sites with a protein core of 30 kDa. Western blots revealed that the 39-45 kDa IGFBP-3 fragment is a glycoprotein. (PMID: 23403918, PMID: 24926947, PMID: 19887447)

Storage

Storage:
Store at -80°C.
The product is shipped with ice packs. Upon receipt, store it immediately at -80°C

Storage Buffer:
PBS Only

For technical support and original validation data for this product please contact:

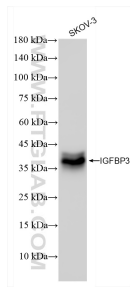
T: 4006900926

E: Proteintech-CN@ptglab.com

W: ptgcn.com

This product is exclusively available under Proteintech Group brand and is not available to purchase from any other manufacturer.

Selected Validation Data



SKOV-3 cells were subjected to SDS PAGE followed by western blot with 84470-4-RR (IGFBP3 antibody) at dilution of 1:4000 incubated at room temperature for 1.5 hours. This data was developed using the same antibody clone with 84470-4-PBS in a different storage buffer formulation.