

For Research Use Only

# CD107b / LAMP2 Recombinant antibody

Catalog Number: 84474-7-RR



## Basic Information

<b>Catalog Number:</b> 84474-7-RR	<b>GenBank Accession Number:</b> NM_001017959.2	<b>Purification Method:</b> Protein A purification
<b>Size:</b> 1000 ug/ml	<b>GeneID (NCBI):</b> 16784	<b>CloneNo.:</b> 241893C1
<b>Source:</b> Rabbit	<b>UNIPROT ID:</b> P17047-1	<b>Recommended Dilutions:</b> IF/ICC 1:400-1:1600
<b>Isotype:</b> IgG	<b>Full Name:</b> lysosomal-associated membrane protein 2	
	<b>Calculated MW:</b> 46 kDa	

## Applications

<b>Tested Applications:</b> IF/ICC, ELISA	<b>Positive Controls:</b> IF/ICC : NIH/3T3 cells,
<b>Species Specificity:</b> mouse	

## Background Information

Lysosomal-associated membrane protein 2 (LAMP2, synonyms: LAMPB, CD107b) is a member of a family of membrane glycoproteins. This glycoprotein provides selectins with carbohydrate ligands. LAMP2 may play a role in tumor cell metastasis. It may also function in the protection, maintenance, and adhesion of the lysosome. Prior to posttranslational modification, LAMP2 is a ~45 kDa polypeptide. Mature, functional LAMP2 is extensively glycosylated with a variety of different N-linked and O-linked oligosaccharides.

## Storage

**Storage:**  
Store at -20°C. Stable for one year after shipment.  
**Storage Buffer:**  
PBS with 0.02% sodium azide and 50% glycerol pH 7.3.  
Aliquoting is unnecessary for -20°C storage

For technical support and original validation data for this product please contact:

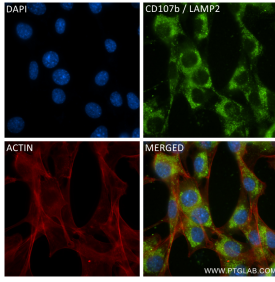
T: 4006900926

E: [Proteintech-CN@ptglab.com](mailto:Proteintech-CN@ptglab.com)

W: [ptgcn.com](http://ptgcn.com)

This product is exclusively available under Proteintech Group brand and is not available to purchase from any other manufacturer.

## Selected Validation Data



Immunofluorescent analysis of (4% PFA) fixed NIH/3T3 cells using CD107b / LAMP2 antibody (84474-7-RR, Clone: 241893C1) at dilution of 1:800 and CoraLite®488-Conjugated Goat Anti-Rabbit IgG(H+L) (SA00013-2), CL594-Phalloidin (red).