

For Research Use Only

# Integrin beta-6 Recombinant antibody, PBS Only (Capture)

Catalog Number: 84475-5-PBS



## Basic Information

Catalog Number: 84475-5-PBS	GenBank Accession Number: BC121178	Purification Method: Protein A purification
Size: 1 mg/ml	GeneID (NCBI): 3694	CloneNo.: 241877H5
Source: Rabbit	UNIPROT ID: P18564	
Isotype: IgG	Full Name: integrin, beta 6	
Immunogen Catalog Number: AG29002	Calculated MW: 788 aa, 86 kDa	

## Applications

**Tested Applications:**  
Sandwich ELISA, Indirect ELISA, Sample test

**Species Specificity:**  
human

## Background Information

### Storage

**Storage:**  
Store at -80°C.  
**The product is shipped with ice packs. Upon receipt, store it immediately at -80°C**

**Storage Buffer:**  
PBS Only

For technical support and original validation data for this product please contact:

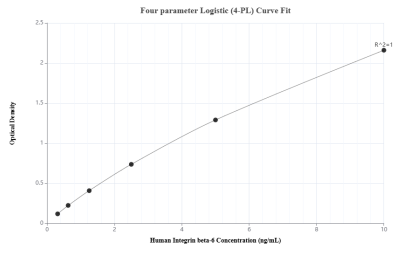
T: 4006900926

E: [Proteintech-CN@ptglab.com](mailto:Proteintech-CN@ptglab.com)

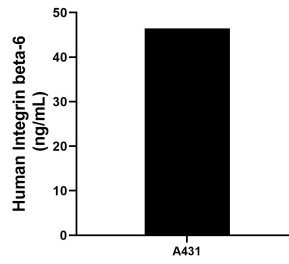
W: [ptgcn.com](http://ptgcn.com)

**This product is exclusively available under Proteintech Group brand and is not available to purchase from any other manufacturer.**

## Selected Validation Data



Sandwich ELISA standard curve of MP01331-4, Human Integrin beta-6 Recombinant Matched Antibody Pair - PBS only. 84475-5-PBS was coated to a plate as the capture antibody and incubated with serial dilutions of standard Ag29002. 84475-4-PBS was HRP conjugated as the detection antibody. Range: 0.313-10 ng/mL



The mean Integrin beta-6 concentration was determined to be 46.45 ng/mL in A431 cell extract based on a 1.3 mg/mL extract load.