

For Research Use Only

# CSF1R Recombinant antibody, PBS Only (Capture)

Catalog Number: 84477-5-PBS



## Basic Information

Catalog Number:

84477-5-PBS

Size:

1 mg/ml

Source:

Rabbit

Isotype:

IgG

GenBank Accession Number:

BC047521

GeneID (NCBI):

1436

UNIPROT ID:

P07333

Full Name:

colony stimulating factor 1 receptor

Calculated MW:

972 aa, 108 kDa

Purification Method:

Protein A purification

CloneNo.:

241675G4

## Applications

Tested Applications:

Sandwich ELISA, Indirect ELISA, Sample test

Species Specificity:

human

## Background Information

### Storage

Storage:

Store at -80°C.

The product is shipped with ice packs. Upon receipt, store it immediately at -80°C

Storage Buffer:

PBS Only

For technical support and original validation data for this product please contact:

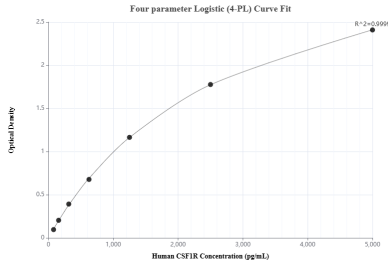
T: 4006900926

E: Proteintech-CN@ptglab.com

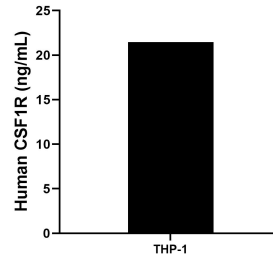
W: ptgcn.com

This product is exclusively available under Proteintech Group brand and is not available to purchase from any other manufacturer.

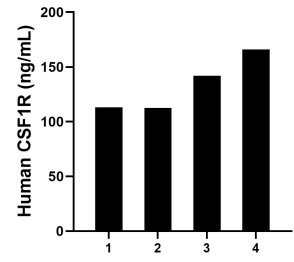
## Selected Validation Data



Sandwich ELISA standard curve of MP01340-4, Human CSF1R Recombinant Matched Antibody Pair - PBS only. 84477-5-PBS was coated to a plate as the capture antibody and incubated with serial dilutions of standard RP00001. 84477-4-PBS was HRP conjugated as the detection antibody. Range: 78.1-5000 pg/mL



The mean CSF1R concentration was determined to be 21.46 ng/mL in THP-1 cell extract based on a 4.8 mg/mL extract load.



Serum of four individual healthy human donors was measured. The human CSF1R concentration of detected samples was determined to be 133.41 ng/mL with a range of 112.57 - 165.97 ng/mL