

For Research Use Only

CCDC25 Recombinant antibody, PBS Only (Detector)

Catalog Number: 84484-3-PBS



Basic Information

Catalog Number: 84484-3-PBS	GenBank Accession Number: BC032588	Purification Method: Protein A purification
Size: 1 mg/ml	GeneID (NCBI): 55246	CloneNo.: 241878H5
Source: Rabbit	UNIPROT ID: Q86WRO	
Isotype: IgG	Full Name: coiled-coil domain containing 25	
Immunogen Catalog Number: AG15593	Calculated MW: 208 aa, 24 kDa	
	Observed MW: 24-26 kDa	

Applications

Tested Applications:
WB, Cytometric bead array, Indirect ELISA

Species Specificity:
human, mouse

Background Information

Storage

Storage:
Store at -80°C.
The product is shipped with ice packs. Upon receipt, store it immediately at -80°C

Storage Buffer:
PBS Only

For technical support and original validation data for this product please contact:

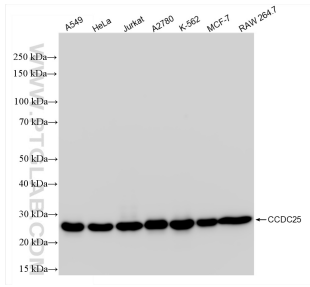
T: 4006900926

E: Proteintech-CN@ptglab.com

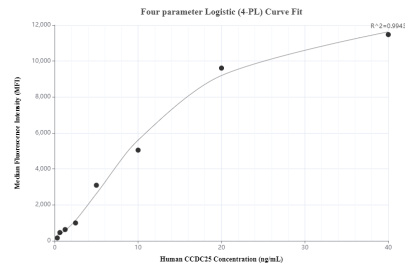
W: ptgcn.com

This product is exclusively available under Proteintech Group brand and is not available to purchase from any other manufacturer.

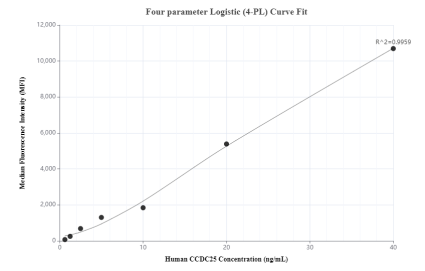
Selected Validation Data



Various lysates were subjected to SDS PAGE followed by western blot with 84484-3-RR (CCDC25 antibody) at dilution of 1:10000 incubated at room temperature for 1.5 hours. This data was developed using the same antibody clone with 84484-3-PBS in a different storage buffer formulation.



Cytometric bead array standard curve of MP01321-1, CCDC25 Recombinant Matched Antibody Pair, PBS Only. Capture antibody: 84484-2-PBS. Detection antibody: 84484-3-PBS. Standard: Ag15593. Range: 0.313-40 ng/mL.



Cytometric bead array standard curve of MP01321-2, CCDC25 Recombinant Matched Antibody Pair, PBS Only. Capture antibody: 84484-1-PBS. Detection antibody: 84484-3-PBS. Standard: Ag15593. Range: 0.625-40 ng/mL.