

For Research Use Only

Mouse EMMPRIN/CD147 Recombinant antibody, PBS Only (Capture)

Catalog Number: 84488-5-PBS



Basic Information

Catalog Number: 84488-5-PBS	GenBank Accession Number: NM_009768.2	Purification Method: Protein A purification
Size: 1 mg/ml	GeneID (NCBI): 12215	CloneNo.: 241852B10
Source: Rabbit	UNIPROT ID: P18572-1	
Isotype: IgG	Full Name: basigin	
	Calculated MW: 42kDa	

Applications

Tested Applications:
Sandwich ELISA, Indirect ELISA, Sample test

Species Specificity:
mouse

Background Information

Storage

Storage:
Store at -80°C.
The product is shipped with ice packs. Upon receipt, store it immediately at -80°C

Storage Buffer:
PBS Only

For technical support and original validation data for this product please contact:

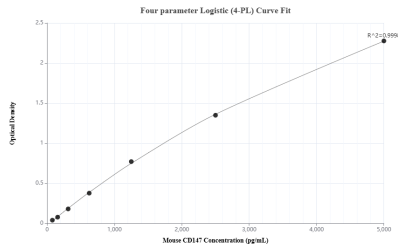
T: 4006900926

E: Proteintech-CN@ptglab.com

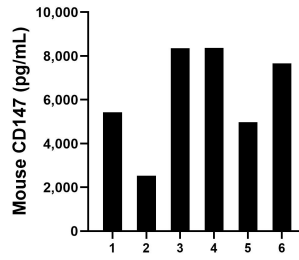
W: ptgcn.com

This product is exclusively available under Proteintech Group brand and is not available to purchase from any other manufacturer.

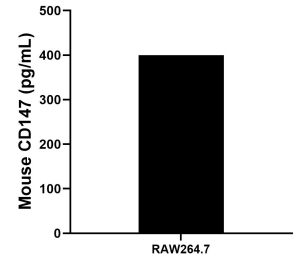
Selected Validation Data



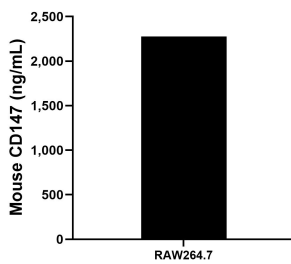
Sandwich ELISA standard curve of MP01320-4, Mouse CD147 Recombinant Matched Antibody Pair - PBS only. 84488-5-PBS was coated to a plate as the capture antibody and incubated with serial dilutions of standard Eg1530. 84488-4-PBS was HRP conjugated as the detection antibody. Range: 78.1-5000 pg/mL



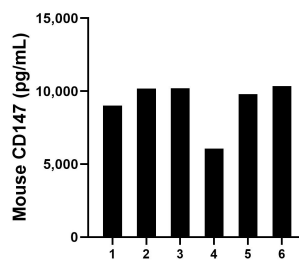
Urine of six mice was measured. The mouse CD147 concentration of detected samples was determined to be 6,220.5 pg/mL with a range of 2,528.0 - 8372.5 pg/mL



RAW264.7 cells were cultured in DMEM supplemented with 10% fetal bovine serum. An aliquot of the cell culture supernate was removed, assayed for mouse CD147, and measured 400.0 pg/mL



The mean CD147 concentration was determined to be 2,277.8 ng/mL in RAW264.7 cell extract based on a 4.8 mg/mL extract load.



Serum of six mice was measured. The mouse CD147 concentration of detected samples was determined to be 9,267.4 pg/mL with a range of 6,072.1 - 10,344.1 pg/mL