

For Research Use Only

UHRF1 Recombinant antibody, PBS Only (Capture)

Catalog Number: 84489-1-PBS



Basic Information

Catalog Number: 84489-1-PBS	GenBank Accession Number: BC113875	Purification Method: Protein A purification
Size: 1 mg/ml	GeneID (NCBI): 29128	CloneNo.: 241872D1
Source: Rabbit	UNIPROT ID: Q96T88	
Isotype: IgG	Full Name: ubiquitin-like with PHD and ring finger domains 1	
Immunogen Catalog Number: AG17498	Calculated MW: 806 aa, 91 kDa	

Applications

Tested Applications:
Cytometric bead array, Sandwich ELISA, Indirect ELISA,
Sample test

Species Specificity:
human

Background Information

Storage

Storage:
Store at -80°C.
The product is shipped with ice packs. Upon receipt, store it immediately at -80°C

Storage Buffer:
PBS Only

For technical support and original validation data for this product please contact:

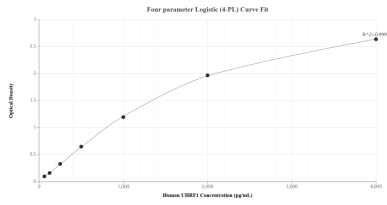
T: 4006900926

E: Proteintech-CN@ptglab.com

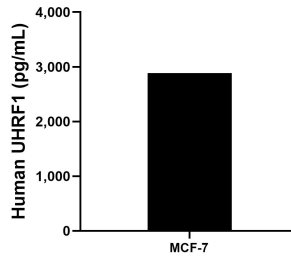
W: ptgcn.com

This product is exclusively available under Proteintech Group brand and is not available to purchase from any other manufacturer.

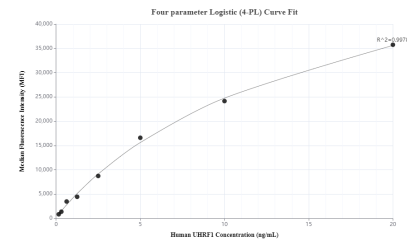
Selected Validation Data



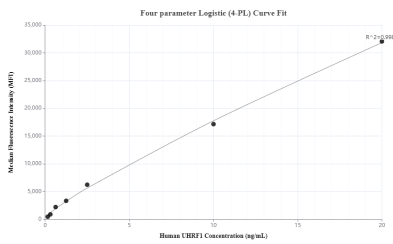
Sandwich ELISA standard curve of MP01341-1, Human UHRF1 Recombinant Matched Antibody Pair - PBS only. 84489-1-PBS was coated to a plate as the capture antibody and incubated with serial dilutions of standard Ag17498. 84489-2-PBS was HRP conjugated as the detection antibody. Range: 62.5-4000 pg/mL.



The mean UHRF1 concentration was determined to be 2887.0 ng/mL in MCF-7 cell extract based on a 1.5 mg/mL extract load.



Cytometric bead array standard curve of MP01341-1, UHRF1 Recombinant Matched Antibody Pair, PBS Only. Capture antibody: 84489-1-PBS. Detection antibody: 84489-2-PBS. Standard: Ag17498. Range: 0.156-20 ng/mL.



Cytometric bead array standard curve of MP01341-2, UHRF1 Recombinant Matched Antibody Pair, PBS Only. Capture antibody: 84489-1-PBS. Detection antibody: 84489-3-PBS. Standard: Ag17498. Range: 0.156-20 ng/mL.