

For Research Use Only

# EPCAM/CD326 Recombinant antibody

Catalog Number: 84490-2-RR



## Basic Information

|                                      |  |  |
|--------------------------------------|--|--|
| <b>Catalog Number:</b><br>84490-2-RR | <b>GenBank Accession Number:</b><br>NM_008532.2        | <b>Purification Method:</b><br>Protein A purification                  |
| <b>Size:</b><br>1000 µg/ml           | <b>GeneID (NCBI):</b><br>17075                         | <b>CloneNo.:</b><br>241851E11  |
| <b>Source:</b><br>Rabbit             | <b>UNIPROT ID:</b><br>Q99JW5                           | <b>Recommended Dilutions:</b><br>WB 1:5000-1:50000<br>IHC 1:400-1:1600 |
| <b>Isotype:</b><br>IgG               | <b>Full Name:</b><br>epithelial cell adhesion molecule |  |
|                                      | <b>Calculated MW:</b><br>35 kDa                        |  |
|                                      | <b>Observed MW:</b><br>35 kDa, 40 kDa                  |  |

## Applications

### Tested Applications:

WB, IHC, ELISA

### Species Specificity:

mouse

**Note-IHC: suggested antigen retrieval with TE buffer pH 9.0; (\*) Alternatively, antigen retrieval may be performed with citrate buffer pH 6.0**

### Positive Controls:

WB : mouse colon tissue, mouse small intestine tissue

IHC : mouse colon tissue, mouse small intestine tissue

## Background Information

Epithelial cell adhesion molecule (EpCAM, CD326) is a type I transmembrane glycoprotein that functions as a homophilic, epithelial-specific intercellular cell-adhesion molecule. In addition to cell adhesion, EpCAM is also involved in cellular signaling, cell migration, proliferation, and differentiation. EpCAM is highly expressed on most carcinomas and therefore of potential use as a diagnostic and prognostic marker for a variety of carcinomas, and has become a therapeutic target. EpCAM may occur in distinct forms due to glycosylation. (PMID: 20837599; 19249674; 21576002; 22647938; 12691820)

## Storage

### Storage:

Store at -20°C. Stable for one year after shipment.

### Storage Buffer:

PBS with 0.02% sodium azide and 50% glycerol pH 7.3.

Aliquoting is unnecessary for -20°C storage

For technical support and original validation data for this product please contact:

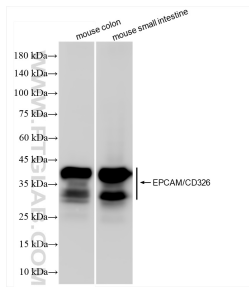
T: 4006900926

E: [Proteintech-CN@ptglab.com](mailto:Proteintech-CN@ptglab.com)

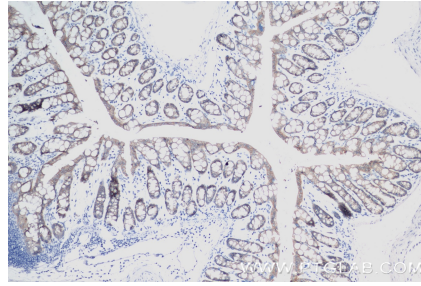
W: [ptgcn.com](http://ptgcn.com)

**This product is exclusively available under Proteintech Group brand and is not available to purchase from any other manufacturer.**

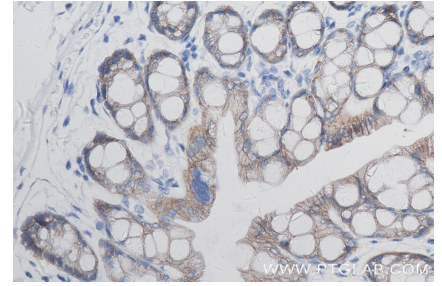
## Selected Validation Data



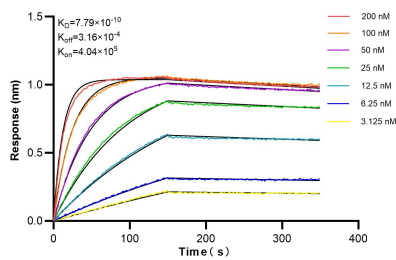
Various lysates were subjected to SDS PAGE followed by western blot with 84490-2-RR (EpCAM/TROP1 antibody) at dilution of 1:10000 incubated at room temperature for 1.5 hours.



Immunohistochemical analysis of paraffin-embedded mouse colon tissue slide using 84490-2-RR (EPCAM/CD326 antibody) at dilution of 1:800 (under 10x lens). Heat mediated antigen retrieval with Tris-EDTA buffer (pH 9.0).



Immunohistochemical analysis of paraffin-embedded mouse colon tissue slide using 84490-2-RR (EPCAM/CD326 antibody) at dilution of 1:800 (under 40x lens). Heat mediated antigen retrieval with Tris-EDTA buffer (pH 9.0).



Biolayer interferometry (BLI) kinetic assays of 84490-2-RR against Mouse EPCAM/CD326 were performed. The affinity constant is 0.779 nM.