

For Research Use Only

# PQBP1 Recombinant antibody, PBS Only

Catalog Number: 84491-6-PBS



## Basic Information

<b>Catalog Number:</b> 84491-6-PBS	<b>GenBank Accession Number:</b> BC012358	<b>Purification Method:</b> Protein A purification
<b>Size:</b> 1 mg/ml	<b>GeneID (NCBI):</b> 10084	<b>CloneNo.:</b> 241901B11
<b>Source:</b> Rabbit	<b>UNIPROT ID:</b> O60828	
<b>Isotype:</b> IgG	<b>Full Name:</b> polyglutamine binding protein 1	
<b>Immunogen Catalog Number:</b> AG9329	<b>Calculated MW:</b> 265 aa, 30 kDa	
	<b>Observed MW:</b> 30-32 kDa	

## Applications

**Tested Applications:**  
WB, IF/ICC, Indirect ELISA

**Species Specificity:**  
human

## Background Information

PQBP1 (Polyglutamine-binding protein 1) is also named as NPW38 and JM26. PQBP1 senses extrinsic tau 3R/4R proteins by direct interaction and triggers an innate immune response by activating a cyclic GMP-AMP synthase (cGAS)-Stimulator of interferon genes (STING) pathway (PMID: 34782623). PQBP1 is abundantly expressed in the central nervous system during development. PQBP1 is a component of the precatalytic spliceosome (B complex) that is involved in splicing. PQBP1 was predominantly localized in the cell nucleus. PQBP1 is overexpressed in various cancer types including breast cancer, colon cancer, and glioblastoma (PMID: 38342602).

## Storage

**Storage:**  
Store at -80°C.  
**The product is shipped with ice packs. Upon receipt, store it immediately at -80°C**

**Storage Buffer:**  
PBS Only

For technical support and original validation data for this product please contact:

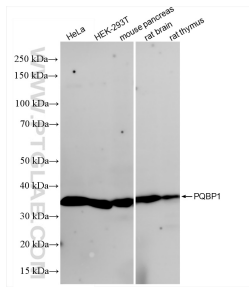
T: 4006900926

E: [Proteintech-CN@ptglab.com](mailto:Proteintech-CN@ptglab.com)

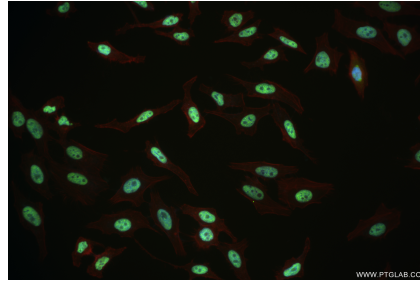
W: [ptgcn.com](http://ptgcn.com)

**This product is exclusively available under Proteintech Group brand and is not available to purchase from any other manufacturer.**

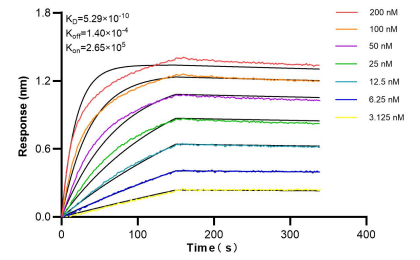
## Selected Validation Data



Various lysates were subjected to SDS PAGE followed by western blot with 84491-6-RR (PQBP1 antibody) at dilution of 1:4000 incubated at room temperature for 1.5 hours. This data was developed using the same antibody clone with 84491-6-PBS in a different storage buffer formulation.



Immunofluorescent analysis of (4% PFA) fixed HeLa cells using PQBP1 antibody (84491-6-RR, Clone: 241901B11) at dilution of 1:500 and CoraLite® 488-Conjugated Goat Anti-Rabbit IgG(H+L) (SA00013-2), CL594-Phalloidin (red). This data was developed using the same antibody clone with 84491-6-PBS in a different storage buffer formulation.



Bi-layer interferometry (BLI) kinetic assays of 84491-6-RR against Human PQBP1 were performed. The affinity constant is 0.529 nM.