

For Research Use Only

# TTLL12 Recombinant antibody, PBS Only

Catalog Number: 84493-6-PBS



## Basic Information

<b>Catalog Number:</b> 84493-6-PBS	<b>GenBank Accession Number:</b> BC001070	<b>Purification Method:</b> Protein A purification
<b>Size:</b> 1 mg/ml	<b>GeneID (NCBI):</b> 23170	<b>CloneNo.:</b> 241904F4
<b>Source:</b> Rabbit	<b>UNIPROT ID:</b> Q14166	
<b>Isotype:</b> IgG	<b>Full Name:</b> tubulin tyrosine ligase-like family, member 12	
<b>Immunogen Catalog Number:</b> AG13804	<b>Calculated MW:</b> 644 aa, 74 kDa	
	<b>Observed MW:</b> 75 kDa	

## Applications

**Tested Applications:**  
WB, Indirect ELISA

**Species Specificity:**  
human

## Background Information

TTLL12 is a member of the tubulin tyrosine ligase (TTL) family that is highly conserved in phylogeny. TTLL12 contains 644 amino acids and has a SET-like domain and a TTL-like domain. TTLL12 is involved in the regulation of tubulin and histone modification and is a negative regulator of RNA virus-induced type I interferon. During the cell cycle, Both trimethylation of H4K20 and tubulin deetyrosination levels were altered by TTLL2 expression (PMID: 23251473).

## Storage

**Storage:**  
Store at -80°C.  
**The product is shipped with ice packs. Upon receipt, store it immediately at -80°C**

**Storage Buffer:**  
PBS Only

For technical support and original validation data for this product please contact:

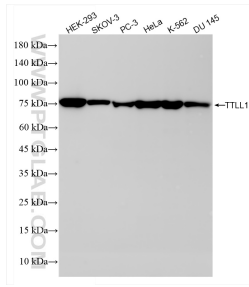
T: 4006900926

E: [Proteintech-CN@ptglab.com](mailto:Proteintech-CN@ptglab.com)

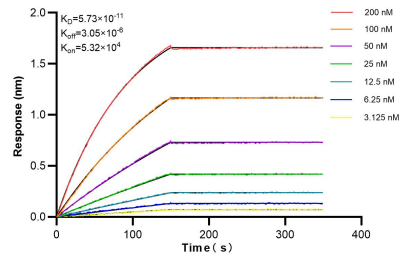
W: [ptgcn.com](http://ptgcn.com)

**This product is exclusively available under Proteintech Group brand and is not available to purchase from any other manufacturer.**

## Selected Validation Data



Various lysates were subjected to SDS PAGE followed by western blot with 84493-6-RR (TLL12 antibody) at dilution of 1:3000 incubated at room temperature for 1.5 hours. This data was developed using the same antibody clone with 84493-6-PBS in a different storage buffer formulation.



Biolayer interferometry (BLI) kinetic assays of 84493-6-RR against Human TLL12 were performed. The affinity constant is 57.3 pM.