

For Research Use Only

NDUFA4L2 Recombinant antibody, PBS Only

Catalog Number: 84498-1-PBS



Basic Information

Catalog Number:

84498-1-PBS

Size:

1 mg/ml

Source:

Rabbit

Isotype:

IgG

Immunogen Catalog Number:

AG9600

GenBank Accession Number:

BC011910

GeneID (NCBI):

56901

UNIPROT ID:

Q9NRX3

Full Name:

NADH dehydrogenase (ubiquinone) 1

alpha subcomplex, 4-like 2

Calculated MW:

87 aa, 10 kDa

Observed MW:

10 kDa

Purification Method:

Protein A purification

CloneNo.:

241622B12

Applications

Tested Applications:

WB, IHC, IF/ICC, Indirect ELISA

Species Specificity:

human, mouse

Background Information

NDUFA4L2 (NADH dehydrogenase [ubiquinone] 1 alpha subcomplex subunit 4-like 2), also named as NUOMS, is a HIF-1 α target gene that localizes to the mitochondria and belongs to the complex I NDUFA4 subunit family. It downregulates oxygen consumption and Complex I activity in hypoxia. NDUFA4L2 is involved in hypoxic adaptation by decreasing mitochondrial ROS production.

Storage

Storage:

Store at -80°C.

The product is shipped with ice packs. Upon receipt, store it immediately at -80°C

Storage Buffer:

PBS Only

For technical support and original validation data for this product please contact:

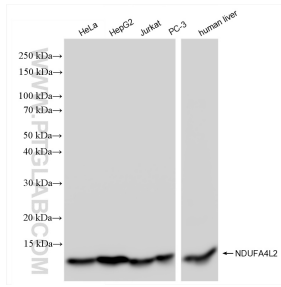
T: 4006900926

E: Proteintech-CN@ptglab.com

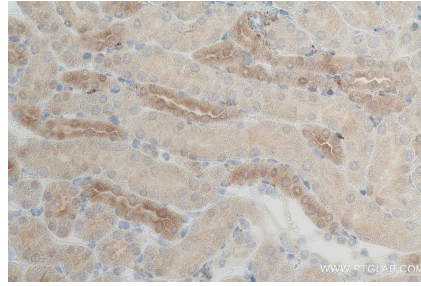
W: ptgcn.com

This product is exclusively available under Proteintech Group brand and is not available to purchase from any other manufacturer.

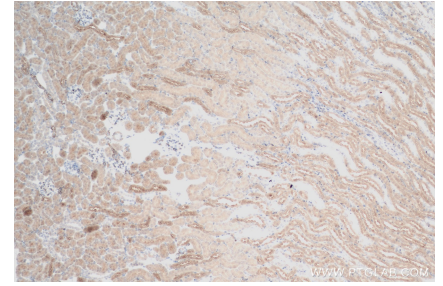
Selected Validation Data



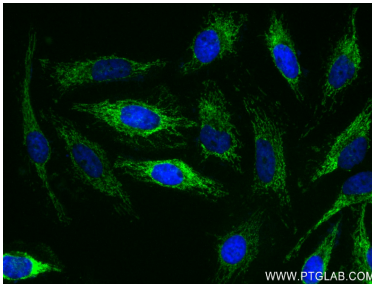
Various lysates were subjected to SDS PAGE followed by western blot with 84498-1-RR (NDUFA4L2 antibody) at dilution of 1:10000 incubated at room temperature for 1.5 hours. This data was developed using the same antibody clone with 84498-1-PBS in a different storage buffer formulation.



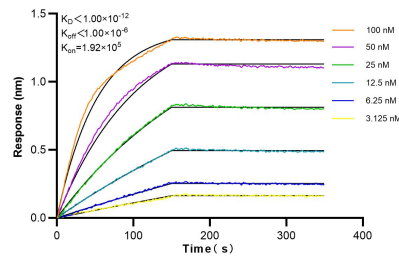
Immunohistochemical analysis of paraffin-embedded mouse kidney tissue slide using 84498-1-RR (NDUFA4L2 antibody) at dilution of 1:200 (under 10x lens). Heat mediated antigen retrieval was used with Tris-EDTA buffer (pH 9.0). This data was developed using the same antibody clone with 84498-1-PBS in a different storage buffer formulation.



Immunohistochemical analysis of paraffin-embedded mouse kidney tissue slide using 84498-1-RR (NDUFA4L2 antibody) at dilution of 1:200 (under 40x lens). Heat mediated antigen retrieval was used with Tris-EDTA buffer (pH 9.0). This data was developed using the same antibody clone with 84498-1-PBS in a different storage buffer formulation.



Immunofluorescent analysis of (4% PFA) fixed HeLa cells using NDUFA4L2 antibody (84498-1-RR, Clone: 241622B12) at dilution of 1:500 and CoraLite@488-Conjugated Goat Anti-Rabbit IgG(H+L) (SA00013-2). This data was developed using the same antibody clone with 84498-1-PBS in a different storage buffer formulation.



Biolayer interferometry (BLI) kinetic assays of 84498-1-RR against Human NDUFA4L2 were performed. The affinity constant is below 1 pM.