

For Research Use Only

SELPLG/CD162 Recombinant antibody, PBS Only

Catalog Number: 84500-1-PBS



Basic Information

Catalog Number: 84500-1-PBS	GenBank Accession Number: BC029782	Purification Method: Protein A purification
Size: 1 mg/ml	GeneID (NCBI): 6404	CloneNo.: 241297G10
Source: Rabbit	UNIPROT ID: Q14242	
Isotype: IgG	Full Name: selectin P ligand	
	Calculated MW: 412 aa, 43 kDa	

Applications

Tested Applications:
IF/ICC, Indirect ELISA

Species Specificity:
human

Background Information

SELPLG (selectin P ligand), also known as CD162 or PSGL-1, is a 120 kDa type I transmembrane mucin-like glycoprotein. It is an adhesion molecule expressed on the surface of neutrophils, monocytes, and most lymphocytes as a homodimer of approximately 230-250 kDa (PMID: 7545173; 1378449; 9353350). SELPLG plays a critical role in the early stages of inflammation due to its ability to bind E-selectin (CD62E), L-selectin (CD62L), and P-selectin (CD62P) (PMID: 35597982).

Storage

Storage:
Store at -80°C.
The product is shipped with ice packs. Upon receipt, store it immediately at -80°C

Storage Buffer:
PBS Only

For technical support and original validation data for this product please contact:

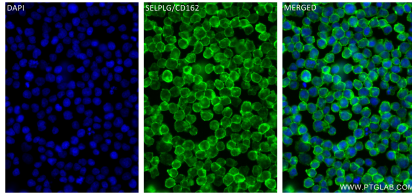
T: 4006900926

E: Proteintech-CN@ptglab.com

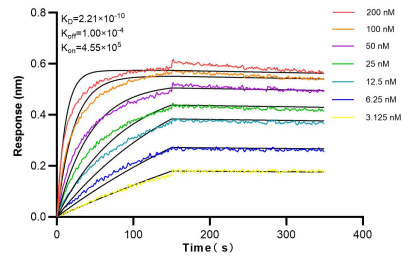
W: ptgcn.com

This product is exclusively available under Proteintech Group brand and is not available to purchase from any other manufacturer.

Selected Validation Data



Immunofluorescent analysis of (4% PFA) fixed Jurkat cells using SELPLG antibody (84500-1-RR, Clone: 241297G10) at dilution of 1:250 and CoraLite®488-Conjugated Goat Anti-Rabbit IgG(H+L) (SA00013-2). This data was developed using the same antibody clone with 84500-1-PBS in a different storage buffer formulation.



Biolayer interferometry (BLI) kinetic assays of 84500-1-RR against Human SELPLG/CD162 were performed. The affinity constant is 0.221 nM.