

For Research Use Only

SELPLG/CD162 Recombinant antibody

Catalog Number: 84500-1-RR



Basic Information

Catalog Number:

84500-1-RR

Size:

1000 μ g/ml

Source:

Rabbit

Isotype:

IgG

GenBank Accession Number:

BC029782

GeneID (NCBI):

6404

UNIPROT ID:

Q14242

Full Name:

selectin P ligand

Calculated MW:

412 aa, 43 kDa

Purification Method:

Protein A purification

CloneNo.:

241297G10

Recommended Dilutions:

IF/ICC 1:125-1:500

Applications

Tested Applications:

IF/ICC, ELISA

Species Specificity:

human

Positive Controls:

IF/ICC : Jurkat cells,

Background Information

SELPLG (selectin P ligand), also known as CD162 or PSGL-1, is a 120 kDa type I transmembrane mucin-like glycoprotein. It is an adhesion molecule expressed on the surface of neutrophils, monocytes, and most lymphocytes as a homodimer of approximately 230-250 kDa (PMID: 7545173; 1378449; 9353350). SELPLG plays a critical role in the early stages of inflammation due to its ability to bind E-selectin (CD62E), L-selectin (CD62L), and P-selectin (CD62P) (PMID: 35597982).

Storage

Storage:

Store at -20°C. Stable for one year after shipment.

Storage Buffer:

PBS with 0.02% sodium azide and 50% glycerol pH 7.3.

Aliquoting is unnecessary for -20°C storage

For technical support and original validation data for this product please contact:

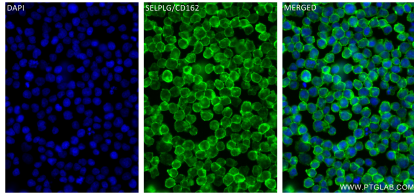
T: 4006900926

E: Proteintech-CN@ptglab.com

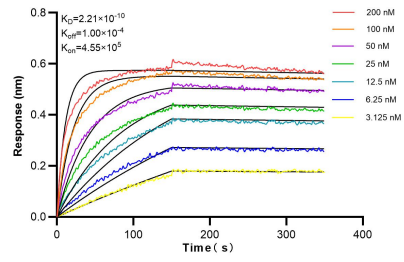
W: ptgcn.com

This product is exclusively available under Proteintech Group brand and is not available to purchase from any other manufacturer.

Selected Validation Data



Immunofluorescent analysis of (4% PFA) fixed Jurkat cells using SELPLG antibody (84500-1-RR, Clone: 241297G10) at dilution of 1:250 and CoraLite®488-Conjugated Goat Anti-Rabbit IgG(H+L) (SA00013-2).



Biolayer interferometry (BLI) kinetic assays of 84500-1-RR against Human SELPLG/CD162 were performed. The affinity constant is 0.221 nM.