

For Research Use Only

# IL-2 R gamma/CD132 Recombinant antibody, PBS Only (Capture)

Catalog Number: 84501-6-PBS



## Basic Information

|                                       |  |   |
|---------------------------------------|--|---|
| <b>Catalog Number:</b><br>84501-6-PBS | <b>GenBank Accession Number:</b><br>NM_000206.3  | <b>Purification Method:</b><br>Protein A purification |
| <b>Size:</b><br>1 mg/ml               | <b>GeneID (NCBI):</b><br>3561  | <b>CloneNo.:</b><br>242020D9                          |
| <b>Source:</b><br>Rabbit              | <b>UNIPROT ID:</b><br>P31785-1   |   |
| <b>Isotype:</b><br>IgG                | <b>Full Name:</b><br>interleukin 2 receptor, gamma<br>(severe combined immunodeficiency) |   |
|                                       | <b>Calculated MW:</b><br>NM_000206.3   |   |

## Applications

**Tested Applications:**  
Sandwich ELISA, Indirect ELISA, Sample test

**Species Specificity:**  
human

## Background Information

### Storage

**Storage:**  
Store at -80°C.  
**The product is shipped with ice packs. Upon receipt, store it immediately at -80°C**

**Storage Buffer:**  
PBS Only

For technical support and original validation data for this product please contact:

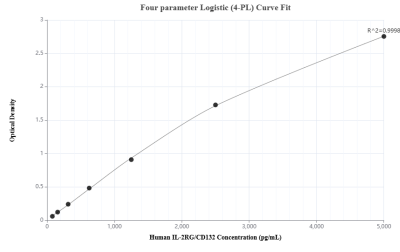
T: 4006900926

E: [Proteintech-CN@ptglab.com](mailto:Proteintech-CN@ptglab.com)

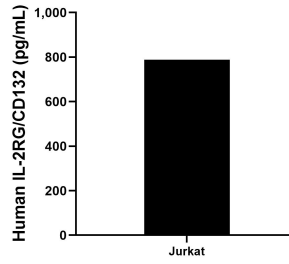
W: [ptgcn.com](http://ptgcn.com)

**This product is exclusively available under Proteintech Group brand and is not available to purchase from any other manufacturer.**

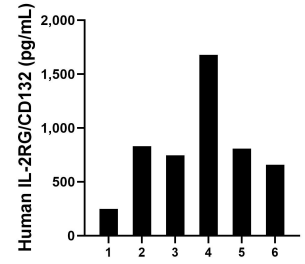
## Selected Validation Data



Sandwich ELISA standard curve of MP01367-3, Human IL-2RG Recombinant Matched Antibody Pair - PBS only. 84501-6-PBS was coated to a plate as the capture antibody and incubated with serial dilutions of standard Eg1705. 84501-5-PBS was HRP conjugated as the detection antibody. Range: 78.1-5000 pg/mL



The mean IL-2RG concentration was determined to be 788.4 pg/mL in Jurkat cell extract based on a 1.5 mg/mL extract load.



Serum of six individual healthy human donors was measured. The human IL-2RG concentration of detected samples was determined to be 827.8 pg/mL with a range of 249.6 - 1,676.9 pg/mL.