

For Research Use Only

CD6 Recombinant antibody, PBS Only (Capture)

Catalog Number: 84508-4-PBS



Basic Information

Catalog Number: 84508-4-PBS	GenBank Accession Number: BC033755	Purification Method: Protein A purification
Size: 1 mg/ml	GeneID (NCBI): 923	CloneNo.: 241965G2
Source: Rabbit	UNIPROT ID: P30203	
Isotype: IgG	Full Name: CD6 molecule	

Applications

Tested Applications:
IF/ICC, Cytometric bead array, Indirect ELISA

Species Specificity:
human

Background Information

CD6 is a type I transmembrane glycoprotein of 105-130 kDa that belongs to the scavenger receptor cysteine-rich superfamily (PMID: 21880988). It is composed of an extracellular region, which consists of three tandem SRCR domains, a transmembrane region, and a cytoplasmic tail devoid of intrinsic catalytic activity but harbouring several phosphorylatable residues suitable for intracellular signal transduction (PMID: 38139340; 23711376). CD6 is expressed by T cells, medullary thymocytes, a subset of B cells and NK cells, and in some cells of the brain (PMID: 1919444; 21178331). CD6 plays a role in lymphocyte activation, proliferation, and survival processes via interaction with its endogenous ligands.

Storage

Storage:
Store at -80°C.
The product is shipped with ice packs. Upon receipt, store it immediately at -80°C

Storage Buffer:
PBS Only

For technical support and original validation data for this product please contact:

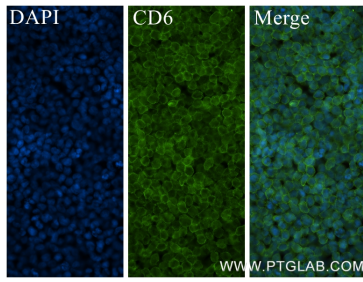
T: 4006900926

E: Proteintech-CN@ptglab.com

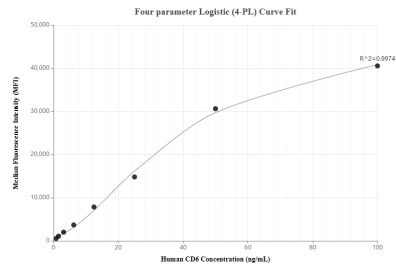
W: ptgcn.com

This product is exclusively available under Proteintech Group brand and is not available to purchase from any other manufacturer.

Selected Validation Data



Immunofluorescent analysis of (4% PFA) fixed MOLT-4 cells using CD6 antibody (84508-4-RR, Clone: 241965G2) at dilution of 1:250 and CoraLite@488-Conjugated Goat Anti-Rabbit IgG(H+L) (SA00013-2). This data was developed using the same antibody clone with 84508-4-PBS in a different storage buffer formulation.



Cytometric bead array standard curve of MP01358-1, CD6 Recombinant Matched Antibody Pair, PBS Only. Capture antibody: 84508-4-PBS. Detection antibody: 84508-3-PBS. Standard: Eg2079. Range: 0.781-100 ng/mL.