

MCM2 Recombinant antibody

Catalog Number: 84511-5-RR

Basic Information

Catalog Number:

84511-5-RR

Size:

1000 ug/ml

Source:

Rabbit

Isotype:

IgG

Immunogen Catalog Number:

AG0798

GenBank Accession Number:

BC007670

GeneID (NCBI):

4171

UNIPROT ID:

P49736

Full Name:

minichromosome maintenance

complex component 2

Calculated MW:

102 kDa

Observed MW:

116-125 kDa

Purification Method:

Protein A purification

CloneNo.:

241968F7

Recommended Dilutions:

WB 1:2000-1:10000

IHC 1:500-1:2000

IF/ICC 1:250-1:1000

Applications

Tested Applications:

WB, IHC, IF/ICC, ELISA

Species Specificity:

human, mouse, rat

Note-IHC: suggested antigen retrieval with TE buffer pH 9.0; (*) Alternatively, antigen retrieval may be performed with citrate buffer pH 6.0

Positive Controls:

WB : HEK-293 cells, HeLa cells, K-562 cells, Jurkat cells, A431 cells, NIH/3T3 cells, HSC-T6 cells

IHC : mouse colon tissue, human cervical squamous cancer tissue, human colon cancer tissue, human placenta tissue, mouse small intestine tissue

IF/ICC : MCF-7 cells, HeLa cells

Background Information

The MCM2-7 complex forms the core of the replicative helicase which acts as the molecular motor that uses ATP binding and hydrolysis to fuel the unwinding of double-stranded DNA at the replication fork in eukaryotes. This complex is the putative replicative helicase essential for 'once per cell cycle' DNA replication initiation and elongation in eukaryotic cells. MCM2, also named CDCL1 and BM28, is a human nuclear protein that plays an important role in 2 crucial steps of the cell cycle, namely, onset of DNA replication and cell division.

Storage

Storage:

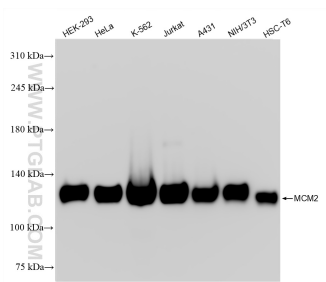
Store at -20°C. Stable for one year after shipment.

Storage Buffer:

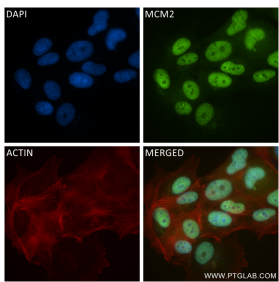
PBS with 0.02% sodium azide and 50% glycerol pH 7.3.

Aliquoting is unnecessary for -20°C storage

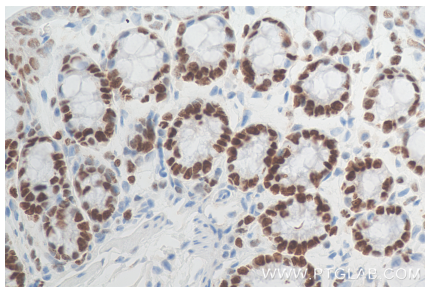
Selected Validation Data



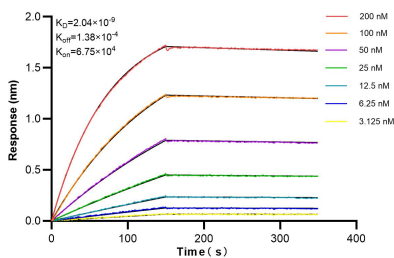
Various lysates were subjected to SDS PAGE followed by western blot with 84511-5-RR (MCM2 antibody) at dilution of 1:5000 incubated at room temperature for 1.5 hours.



Immunofluorescent analysis of (4% PFA) fixed MCF-7 cells using MCM2 antibody (84511-5-RR, Clone: 241968F7) at dilution of 1:500 and CoraLite® 488-Conjugated Goat Anti-Rabbit IgG(H+L) (SA00013-2), CL594-Phalloidin (red).



Immunohistochemical analysis of paraffin-embedded mouse colon tissue slide using 84511-5-RR (MCM2 antibody) at dilution of 1:1000 (under 40x lens). Heat mediated antigen retrieval with Tris-EDTA buffer (pH 9.0).



Biolayer interferometry (BLI) kinetic assays of 84511-5-RR against Human MCM2 were performed. The affinity constant is 2.04 nM.