

For Research Use Only

SAE1 Recombinant antibody, PBS Only (Detector)

Catalog Number: 84516-5-PBS



Basic Information

Catalog Number: 84516-5-PBS	GenBank Accession Number: BC000344	Purification Method: Protein A purification
Size: 1 mg/ml	GeneID (NCBI): 10055	CloneNo.: 241923D7
Source: Rabbit	UNIPROT ID: Q9UBE0	
Isotype: IgG	Full Name: SUMO1 activating enzyme subunit 1	
Immunogen Catalog Number: AG0275	Calculated MW: 38 kDa	

Applications

Tested Applications:
Sandwich ELISA, Indirect ELISA, Sample test

Species Specificity:
human

Background Information

Storage

Storage:
Store at -80°C.
The product is shipped with ice packs. Upon receipt, store it immediately at -80°C

Storage Buffer:
PBS Only

For technical support and original validation data for this product please contact:

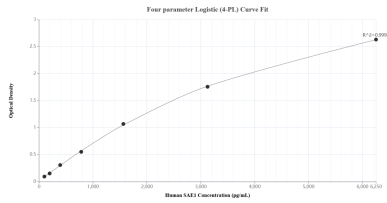
T: 4006900926

E: Proteintech-CN@ptglab.com

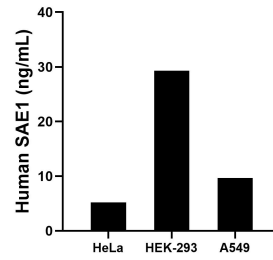
W: ptgcn.com

This product is exclusively available under Proteintech Group brand and is not available to purchase from any other manufacturer.

Selected Validation Data



Sandwich ELISA standard curve of MP01364-3, Human SAE1 Recombinant Matched Antibody Pair - PBS only. 84516-2-PBS was coated to a plate as the capture antibody and incubated with serial dilutions of standard Ag0275. 84516-5-PBS was HRP conjugated as the detection antibody. Range: 97.7-6250 pg/mL



The mean SAE1 concentration was determined to be 5.2 ng/mL in HeLa cell extract based on a 1.5 mg/mL extract load, 29.3 ng/mL in HEK-293 cell extract based on a 1.5 mg/mL extract load and 9.7 ng/mL in A549 cell extract based on a 1.5 mg/mL extract load.