

For Research Use Only

SAE1 Recombinant antibody, PBS Only

Catalog Number:84516-7-PBS



Basic Information

Catalog Number: 84516-7-PBS	GenBank Accession Number: BC000344	Purification Method: Protein A purification
Size: 1 mg/ml	GeneID (NCBI): 10055	CloneNo.: 241923C6
Source: Rabbit	UNIPROT ID: Q9UBE0	
Isotype: IgG	Full Name: SUMO1 activating enzyme subunit 1	
Immunogen Catalog Number: AG0275	Calculated MW: 38 kDa	
	Observed MW: 38 kDa	

Applications

Tested Applications:
WB, FC (Intra), Indirect ELISA

Species Specificity:
human

Background Information

SAE1(SUMO-activating enzyme subunit 1) is also named as AOS1, SUA1, UBLE1A and belongs to the ubiquitin-activating E1 family. SAE1 has a calculated molecular mass of 38 kD. SAE1 and UBA2 form a heterodimer that functions as a SUMO-activating enzyme for the sumoylation of proteins(PMID:9920803). Western blot analysis of synchronized HeLa cells detects increased AOS1 expression as cells progressed through S phase, followed by a substantial decrease in G2 phase. Immunofluorescence analysis shows AOS1 and UBA2 distributed throughout nuclei, but they are excluded from nucleoli.(PMID:11481243).

Storage

Storage:
Store at -80°C.
The product is shipped with ice packs. Upon receipt, store it immediately at -80°C

Storage Buffer:
PBS Only

For technical support and original validation data for this product please contact:

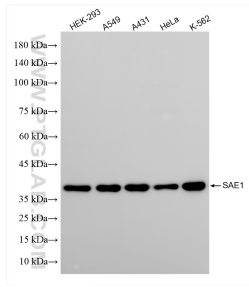
T: 4006900926

E: Proteintech-CN@ptglab.com

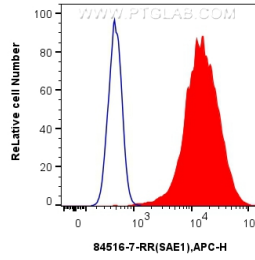
W: ptgcn.com

This product is exclusively available under Proteintech Group brand and is not available to purchase from any other manufacturer.

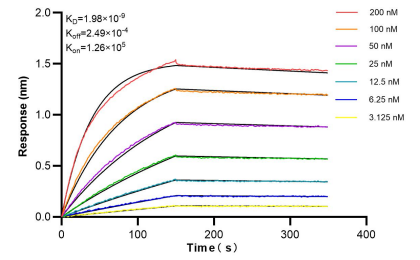
Selected Validation Data



Various lysates were subjected to SDS PAGE followed by western blot with 84516-7-RR (SAE1 antibody) at dilution of 1:10000 incubated at room temperature for 1.5 hours. This data was developed using the same antibody clone with 84516-7-PBS in a different storage buffer formulation.



1×10^6 HeLa cells were intracellularly stained with 0.25 μ g SAE1 Recombinant antibody (84516-7-RR, Clone:241923C6) and APC-Conjugated Goat Anti-Rabbit IgG(H+L)(red), or 0.25 μ g Rabbit IgG Isotype Control Recombinant Antibody (98136-1-RR, Clone:240953C9) (blue). Cells were fixed and permeabilized with True-Nuclear Transcription Factor Buffer Set. This data was developed using the same antibody clone with 84516-7-PBS in a different storage buffer formulation.



Biacore interferometry (BLI) kinetic assays of 84516-7-RR against Human SAE1 were performed. The affinity constant is 1.98 nM.