

For Research Use Only

LBR Recombinant antibody, PBS Only (Detector)

Catalog Number: 84522-5-PBS



Basic Information

Catalog Number: 84522-5-PBS	GenBank Accession Number: BC020079	Purification Method: Protein A purification
Size: 1 mg/ml	GeneID (NCBI): 3930	CloneNo.: 241864E11
Source: Rabbit	UNIPROT ID: Q14739	
Isotype: IgG	Full Name: lamin B receptor	
Immunogen Catalog Number: AG3088	Calculated MW: 615 aa, 71 kDa	

Applications

Tested Applications:
Sandwich ELISA, Indirect ELISA, Sample test

Species Specificity:
human

Background Information

Storage

Storage:
Store at -80°C.
The product is shipped with ice packs. Upon receipt, store it immediately at -80°C

Storage Buffer:
PBS Only

For technical support and original validation data for this product please contact:

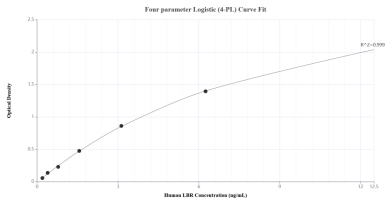
T: 4006900926

E: Proteintech-CN@ptglab.com

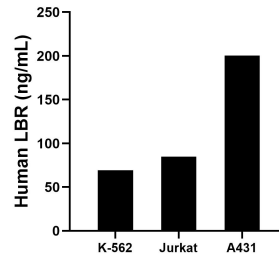
W: ptgcn.com

This product is exclusively available under Proteintech Group brand and is not available to purchase from any other manufacturer.

Selected Validation Data



Sandwich ELISA standard curve of MP01373-3, Human LBR Recombinant Matched Antibody Pair - PBS only. 84522-1-PBS was coated to a plate as the capture antibody and incubated with serial dilutions of standard Ag3088. 84522-5-PBS was HRP conjugated as the detection antibody. Range: 0.195-12.5 ng/mL



The mean LBR concentration was determined to be 69.49 ng/mL in K-562 cell extract based on a 2.40 mg/mL extract load, 84.74 ng/mL in Jurkat cell extract based on a 1.50 mg/mL extract load and 200.46 ng/mL in A431 cell extract based on a 1.50 mg/mL extract load.