

For Research Use Only

# CDC20 Recombinant antibody, PBS Only

Catalog Number: 84531-5-PBS



## Basic Information

<b>Catalog Number:</b> 84531-5-PBS	<b>GenBank Accession Number:</b> BC001088	<b>Purification Method:</b> Protein A purification
<b>Size:</b> 1 mg/ml	<b>GeneID (NCBI):</b> 991	<b>CloneNo.:</b> 241925E12
<b>Source:</b> Rabbit	<b>UNIPROT ID:</b> Q12834	
<b>Isotype:</b> IgG	<b>Full Name:</b> cell division cycle 20 homolog (S. cerevisiae)	
<b>Immunogen Catalog Number:</b> AG0295	<b>Calculated MW:</b> 55 kDa	
	<b>Observed MW:</b> 55 kDa	

## Applications

**Tested Applications:**  
WB, Indirect ELISA

**Species Specificity:**  
human

## Background Information

Cdc20 (Cell-division cycle protein 20 homologue) is also named as p55CDC and belongs to the WD repeat CDC20/Fizzy family. Cdc20 has important functions in chromosome segregation and mitotic exit. Cdc20 is the target of the spindle assembly checkpoint (SAC) and a key cofactor of the anaphase-promoting complex or cyclosome (APC/CCDC20) E3 ubiquitin ligase, thus regulating APC/C ubiquitin activity on specific substrates for their subsequent degradation by the proteasome (PMID: 28202332). The 55-kDa band corresponded to the size of Cdc20 (PMID: 22566641).

## Storage

**Storage:**  
Store at -80°C.  
**The product is shipped with ice packs. Upon receipt, store it immediately at -80°C**

**Storage Buffer:**  
PBS Only

For technical support and original validation data for this product please contact:

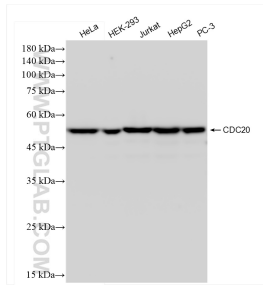
T: 4006900926

E: [Proteintech-CN@ptglab.com](mailto:Proteintech-CN@ptglab.com)

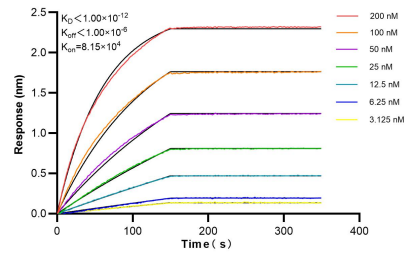
W: [ptgcn.com](http://ptgcn.com)

**This product is exclusively available under Proteintech Group brand and is not available to purchase from any other manufacturer.**

## Selected Validation Data



Various lysates were subjected to SDS PAGE followed by western blot with 84531-5-RR (CDC20 antibody) at dilution of 1:10000 incubated at room temperature for 1.5 hours. This data was developed using the same antibody clone with 84531-5-PBS in a different storage buffer formulation.



Biolayer interferometry (BLI) kinetic assays of 84531-5-RR against Human CDC20 were performed. The affinity constant is below 1 pM.