

For Research Use Only

# FGF19 Recombinant antibody, PBS Only (Capture)

Catalog Number: 84536-3-PBS



## Basic Information

<b>Catalog Number:</b> 84536-3-PBS	<b>GenBank Accession Number:</b> BC017664	<b>Purification Method:</b> Protein A purification
<b>Size:</b> 1 mg/ml	<b>GeneID (NCBI):</b> 9965	<b>CloneNo.:</b> 241740E4
<b>Source:</b> Rabbit	<b>UNIPROT ID:</b> O95750	
<b>Isotype:</b> IgG	<b>Full Name:</b> fibroblast growth factor 19	
<b>Immunogen Catalog Number:</b> HZ-1330	<b>Calculated MW:</b> 216 aa, 24 kDa	
	<b>Observed MW:</b> 24 kDa	

## Applications

**Tested Applications:**  
WB, Cytometric bead array, Sandwich ELISA, Indirect ELISA, Sample test

**Species Specificity:**  
human

## Background Information

Fibroblast growth factor 19 (FGF19) is a member of the fibroblast growth factor family, which consists of proteins with diverse effects on development, organogenesis, and metabolism. FGF19 is unique within this family as it functions as an endocrine protein, circulating in the blood and acting on distant target tissues. It is produced in the distal ileum and secreted into the circulation after a meal, playing a role in controlling the enterohepatic circulation of bile acids and regulating hepatic protein and glycogen metabolism in an insulin-independent manner.

## Storage

**Storage:**  
Store at -80°C.  
**The product is shipped with ice packs. Upon receipt, store it immediately at -80°C**

**Storage Buffer:**  
PBS Only

For technical support and original validation data for this product please contact:

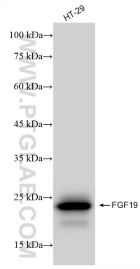
T: 4006900926

E: [Proteintech-CN@ptglab.com](mailto:Proteintech-CN@ptglab.com)

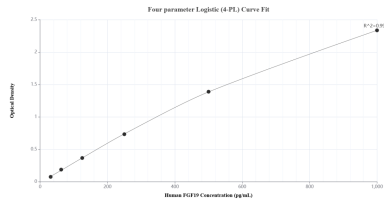
W: [ptgcn.com](http://ptgcn.com)

**This product is exclusively available under Proteintech Group brand and is not available to purchase from any other manufacturer.**

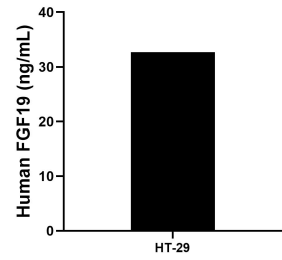
## Selected Validation Data



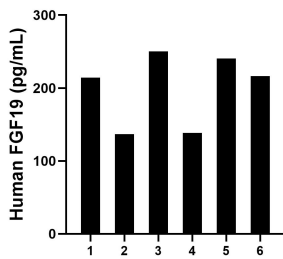
HT-29 cells were subjected to SDS PAGE followed by western blot with 84536-3-RR (FGF19 antibody) at dilution of 1:5000 incubated at room temperature for 1.5 hours. This data was developed using the same antibody clone with 84536-3-PBS in a different storage buffer formulation.



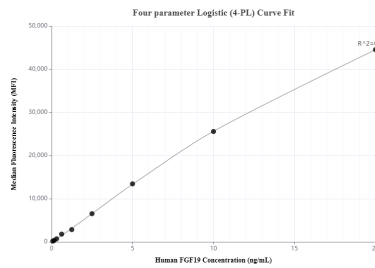
Sandwich ELISA standard curve of MP01398-1, Human FGF19 Recombinant Matched Antibody Pair - PBS only. 84536-3-PBS was coated to a plate as the capture antibody and incubated with serial dilutions of standard HZ-1330. 84536-2-PBS was HRP conjugated as the detection antibody. Range: 31.3-1000 pg/mL



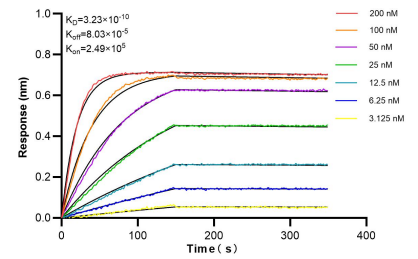
HT-29 cells were cultured in DMEM supplemented with 10% fetal bovine serum, 2.5 mM L-glutamine, 100 U/mL penicillin, and 100 μg/mL streptomycin sulfate. An aliquot of the cell culture supernate was removed, assayed for human FGF19, and measured 32.7 ng/mL



Serum of six individual healthy human donors was measured. The FGF19 concentration of detected samples was determined to be 199.4 pg/mL with a range of 136.6-250.1 pg/mL



Cytometric bead array standard curve of MP01398-1, FGF19 Recombinant Matched Antibody Pair, PBS Only. Capture antibody: 84536-3-PBS. Detection antibody: 84536-2-PBS. Standard: HZ-1330. Range: 0.078-20 ng/mL



Bi-layer interferometry (BLI) kinetic assays of 84536-3-RR against Human FGF19 were performed. The affinity constant is 0.323 nM.