

For Research Use Only

# HSL Recombinant antibody, PBS Only (Detector)

Catalog Number: 84540-1-PBS



## Basic Information

<b>Catalog Number:</b> 84540-1-PBS	<b>GenBank Accession Number:</b> BC070041	<b>Purification Method:</b> Protein A purification
<b>Size:</b> 1 mg/ml	<b>GeneID (NCBI):</b> 3991	<b>CloneNo.:</b> 241875B11
<b>Source:</b> Rabbit	<b>UNIPROT ID:</b> Q05469	
<b>Isotype:</b> IgG	<b>Full Name:</b> Lipase, hormone-sensitive	
<b>Immunogen Catalog Number:</b> AG11360	<b>Calculated MW:</b> 117 kDa	
	<b>Observed MW:</b> 84 kDa	

## Applications

**Tested Applications:**  
WB, IHC, Cytometric bead array, Indirect ELISA

**Species Specificity:**  
human, mouse, rat

## Background Information

Hormone sensitive lipase (HSL) belongs to the 'GDXG' lipolytic enzyme family. In adipose tissue and heart, it primarily hydrolyzes stored triglycerides to free fatty acids, while in steroidogenic tissues, it principally converts cholesteryl esters to free cholesterol for steroid hormone production. HSL has two isoforms with the molecular mass of 117 kDa and 84 kDa.

## Storage

**Storage:**  
Store at -80°C.  
**The product is shipped with ice packs. Upon receipt, store it immediately at -80°C**

**Storage Buffer:**  
PBS Only

For technical support and original validation data for this product please contact:

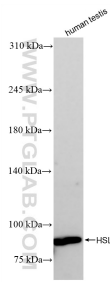
T: 4006900926

E: [Proteintech-CN@ptglab.com](mailto:Proteintech-CN@ptglab.com)

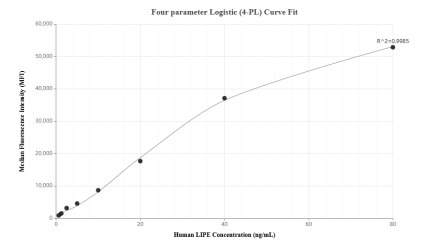
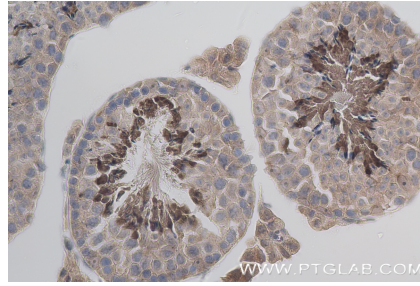
W: [ptgcn.com](http://ptgcn.com)

**This product is exclusively available under Proteintech Group brand and is not available to purchase from any other manufacturer.**

## Selected Validation Data



Human testis tissue were subjected to SDS PAGE followed by western blot with 84540-1-RR (HSL antibody) at dilution of 1:10000 incubated at room temperature for 1.5 hours. This data was developed using the same antibody clone with 84540-1-PBS in a different storage buffer formulation.



Cytometric bead array standard curve of MP01374-1, HSL Recombinant Matched Antibody Pair, PBS Only. Capture antibody: 84540-3-PBS. Detection antibody: 84540-1-PBS. Standard: Ag11360. Range: 0.625-80 ng/mL