

For Research Use Only

ADH1C Recombinant antibody, PBS Only

Catalog Number: 84546-1-PBS



Basic Information

Catalog Number: 84546-1-PBS	GenBank Accession Number: BC062476	Purification Method: Protein A purification
Size: 1 mg/ml	GeneID (NCBI): 126	CloneNo.: 241623C3
Source: Rabbit	UNIPROT ID: P00326	
Isotype: IgG	Full Name: alcohol dehydrogenase 1C (class I), gamma polypeptide	
Immunogen Catalog Number: AG13528	Calculated MW: 375 aa, 40 kDa	
	Observed MW: 40 kDa	

Applications

Tested Applications:
WB, Indirect ELISA

Species Specificity:
mouse

Background Information

Alcohol dehydrogenase 1C (ADH1C), also known as ADH3, is an alcohol dehydrogenase that can catalyze ethanol oxidation to metabolite acetaldehyde. According to THE HUMAN PROTEIN ATLAS database, ADH1C locates mainly to the cytosol and plasma membrane. Genetic polymorphism of the ADH1C gene (ADH1C*1 allele) is associated with various human cancers, such as gastric cancer, oral cancer and CRC, for it encodes an alcohol dehydrogenase producing 2.5 times more acetaldehyde. (PMID: 35300114)

Storage

Storage:
Store at -80°C.
The product is shipped with ice packs. Upon receipt, store it immediately at -80°C

Storage Buffer:
PBS Only

For technical support and original validation data for this product please contact:

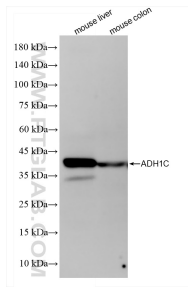
T: 4006900926

E: Proteintech-CN@ptglab.com

W: ptgcn.com

This product is exclusively available under Proteintech Group brand and is not available to purchase from any other manufacturer.

Selected Validation Data



Various lysates were subjected to SDS PAGE followed by western blot with 84546-1-RR (ADH1C antibody) at dilution of 1:6000 incubated at room temperature for 1.5 hours. This data was developed using the same antibody clone with 84546-1-PBS in a different storage buffer formulation.