

For Research Use Only

ADH1C Recombinant antibody

Catalog Number: 84546-2-RR



Basic Information

Catalog Number: 84546-2-RR	GenBank Accession Number: BC062476	Purification Method: Protein A purification
Size: 400 µg/ml	GeneID (NCBI): 126	CloneNo.: 241623A3
Source: Rabbit	UNIPROT ID: P00326	Recommended Dilutions: WB 1:1000-1:8000
Isotype: IgG	Full Name: alcohol dehydrogenase 1C (class I), gamma polypeptide	
Immunogen Catalog Number: AG13528	Calculated MW: 375 aa, 40 kDa	
	Observed MW: 37-45 kDa	

Applications

Tested Applications: WB, ELISA	Positive Controls: WB: mouse liver tissue, mouse colon tissue, human kidney tissue
Species Specificity: human, mouse	

Background Information

Alcohol dehydrogenase 1C (ADH1C), also known as ADH3, is an alcohol dehydrogenase that can catalyze ethanol oxidation to metabolite acetaldehyde. According to THE HUMAN PROTEIN ATLAS database, ADH1C locates mainly to the cytosol and plasma membrane. Genetic polymorphism of the ADH1C gene (ADH1C*1 allele) is associated with various human cancers, such as gastric cancer, oral cancer and CRC, for it encodes an alcohol dehydrogenase producing 2.5 times more acetaldehyde. (PMID: 35300114)

Storage

Storage:
Store at -20°C. Stable for one year after shipment.
Storage Buffer:
PBS with 0.02% sodium azide and 50% glycerol pH 7.3.
Aliquoting is unnecessary for -20°C storage

For technical support and original validation data for this product please contact:

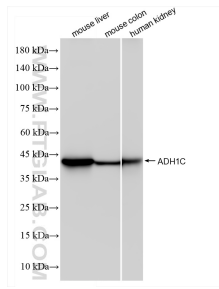
T: 4006900926

E: Proteintech-CN@ptglab.com

W: ptgcn.com

This product is exclusively available under Proteintech Group brand and is not available to purchase from any other manufacturer.

Selected Validation Data



Various lysates were subjected to SDS PAGE followed by western blot with 84546-2-RR (ADH1C antibody) at dilution of 1:4000 incubated at room temperature for 1.5 hours.