

For Research Use Only

# BTN2A1 Recombinant antibody, PBS Only

Catalog Number: 84550-1-PBS



## Basic Information

<b>Catalog Number:</b> 84550-1-PBS	<b>GenBank Accession Number:</b> BC016661	<b>Purification Method:</b> Protein A purification
<b>Size:</b> 1 mg/ml	<b>GeneID (NCBI):</b> 11120	<b>CloneNo.:</b> 241540F10
<b>Source:</b> Rabbit	<b>UNIPROT ID:</b> Q7KYR7	
<b>Isotype:</b> IgG	<b>Full Name:</b> butyrophilin, subfamily 2, member A1	
	<b>Calculated MW:</b> 60 kDa	
	<b>Observed MW:</b> 65 kDa	

## Applications

**Tested Applications:**  
WB, Indirect ELISA

**Species Specificity:**  
human

## Background Information

BTN2A1, also named as BT2.1, BTF 1 is a 527 amino acid protein, which belongs to the immunoglobulin superfamily. BTN2A1 is highly expressed in brain, bone marrow, small intestine, muscle, spleen and pancreas and moderate expression was seen in lung, liver and kidney. The calculated molecular weight of BTN2A1 is 59 kDa, but glycosylation of BTN2A1 is about 65-69 kDa. (PMID: 17785817)

## Storage

**Storage:**  
Store at -80°C.  
**The product is shipped with ice packs. Upon receipt, store it immediately at -80°C**

**Storage Buffer:**  
PBS Only

For technical support and original validation data for this product please contact:

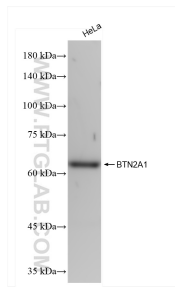
T: 4006900926

E: [Proteintech-CN@ptglab.com](mailto:Proteintech-CN@ptglab.com)

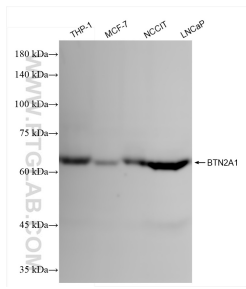
W: [ptgcn.com](http://ptgcn.com)

**This product is exclusively available under Proteintech Group brand and is not available to purchase from any other manufacturer.**

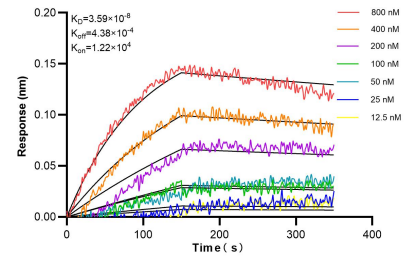
## Selected Validation Data



HeLa cells were subjected to SDS PAGE followed by western blot with 84550-1-RR (BTN2A1 antibody) at dilution of 1:10000 incubated at room temperature for 1.5 hours. This data was developed using the same antibody clone with 84550-1-PBS in a different storage buffer formulation.



Various lysates were subjected to SDS PAGE followed by western blot with 84550-1-RR (BTN2A1 antibody) at dilution of 1:10000 incubated at room temperature for 1.5 hours. This data was developed using the same antibody clone with 84550-1-PBS in a different storage buffer formulation.



Biolayer interferometry (BLI) kinetic assays of 84550-1-RR against Human BTN2A1 were performed. The affinity constant is 35.9 nM.