

For Research Use Only

# TMEM175 Recombinant antibody, PBS Only

Catalog Number: 84554-1-PBS



## Basic Information

|                                             |                                                |                                                       |
|---------------------------------------------|------------------------------------------------|-------------------------------------------------------|
| <b>Catalog Number:</b><br>84554-1-PBS       | <b>GenBank Accession Number:</b><br>BC005158   | <b>Purification Method:</b><br>Protein A purification |
| <b>Size:</b><br>1 mg/ml                     | <b>GeneID (NCBI):</b><br>84286                 | <b>CloneNo.:</b><br>241567B9                          |
| <b>Source:</b><br>Rabbit                    | <b>UNIPROT ID:</b><br>Q9BSA9                   |                                                       |
| <b>Isotype:</b><br>IgG                      | <b>Full Name:</b><br>transmembrane protein 175 |                                                       |
| <b>Immunogen Catalog Number:</b><br>AG13890 | <b>Calculated MW:</b><br>504 aa, 56 kDa        |                                                       |
|                                             | <b>Observed MW:</b><br>41-45 kDa, 54-60 kDa    |                                                       |

## Applications

**Tested Applications:**  
WB, Indirect ELISA

**Species Specificity:**  
human

## Background Information

TMEM175 has two repeats of 6-transmembrane-spanning segments and has no GYG K<sup>+</sup> channel sequence signature-containing, pore-forming P loop. Lysosomes lacking TMEM175 exhibit no K<sup>+</sup> conductance, have a markedly depolarized  $\Delta \Psi$  and little sensitivity to changes in [K<sup>+</sup>], and have compromised luminal pH stability and abnormal fusion with autophagosomes during autophagy. TMEM175 comprises a K<sup>+</sup> channel that underlies the molecular mechanism of lysosomal K<sup>+</sup> permeability. It has two isoforms with MW 41-45 kDa and 54-60 kDa. For optimal WB detection with this antibody, we recommend avoiding boiling the sample after lysis.

## Storage

**Storage:**  
Store at -80°C.  
**The product is shipped with ice packs. Upon receipt, store it immediately at -80°C**

**Storage Buffer:**  
PBS Only

For technical support and original validation data for this product please contact:

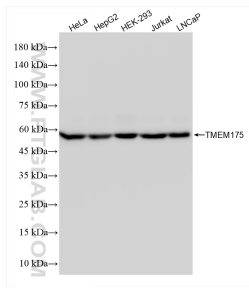
T: 4006900926

E: [Proteintech-CN@ptglab.com](mailto:Proteintech-CN@ptglab.com)

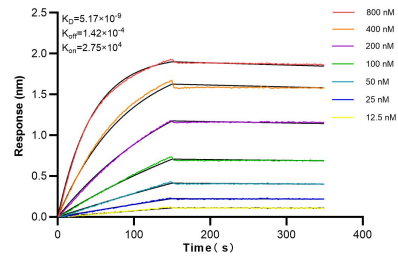
W: [ptgcn.com](http://ptgcn.com)

**This product is exclusively available under Proteintech Group brand and is not available to purchase from any other manufacturer.**

## Selected Validation Data



Various lysates were subjected to SDS PAGE followed by western blot with 84554-1-RR (TMEM175 antibody) at dilution of 1:1000 incubated at room temperature for 1.5 hours. This data was developed using the same antibody clone with 84554-1-PBS in a different storage buffer formulation.



Biacore BLI kinetic assays of 84554-1-RR against Human TMEM175 were performed. The affinity constant is 5.17 nM.