

For Research Use Only

HPSE Recombinant antibody

Catalog Number: 84562-1-RR



Basic Information

Catalog Number: 84562-1-RR	GenBank Accession Number: BC051321	Purification Method: Protein A purification
Size: 1000 µg/ml	GeneID (NCBI): 10855	CloneNo.: 241651E3
Source: Rabbit	UNIPROT ID: Q9Y251	Recommended Dilutions: WB 1:5000-1:50000
Isotype: IgG	Full Name: heparanase	
Immunogen Catalog Number: AG21479	Calculated MW: 543 aa, 61 kDa	
	Observed MW: 50 kDa	

Applications

Tested Applications: WB, FC (Intra), ELISA	Positive Controls: WB : HeLa cells,
Species Specificity: human	

Background Information

HPSE (Heparanase) is also named as HEP, HPA, HPA1, HPR1, HPSE1, HSE1 and belongs to the glycosyl hydrolase 79 family. It is an endoglycosidase that cleaves heparan sulfate proteoglycans (HSPGs) into heparan sulfate side chains and core proteoglycans. HPSE is essential in the disassembly of the extracellular matrix (ECM) by invading cells. It has 3 isoforms produced by alternative splicing with the molecular weight of 61 kDa, 55 kDa and 53 kDa. The full length protein has six glycosylation sites. The cleavage of the 65 kDa form leads to the generation of a linker peptide, and 8 kDa and 50 kDa products. The active form, the 8/50 kDa heterodimer, is resistant to degradation and glycosylation of the 50 kDa subunit appears to be essential for its solubility.

Storage

Storage:
Store at -20°C. Stable for one year after shipment.
Storage Buffer:
PBS with 0.02% sodium azide and 50% glycerol pH 7.3.
Aliquoting is unnecessary for -20°C storage

For technical support and original validation data for this product please contact:

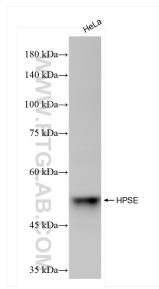
T: 4006900926

E: Proteintech-CN@ptglab.com

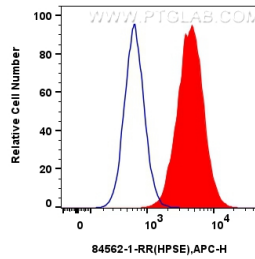
W: ptgcn.com

This product is exclusively available under Proteintech Group brand and is not available to purchase from any other manufacturer.

Selected Validation Data



HeLa cells were subjected to SDS PAGE followed by western blot with 84562-1-RR (HPSE antibody) at dilution of 1:10000 incubated at room temperature for 1.5 hours.



1x10⁶ HepG2 cells were intracellularly stained with 0.25 ug HPSE Recombinant Antibody (84562-1-RR, Clone:241651E3) and Multi-rAb CoraLite® Plus 647-Goat Anti-Rabbit Recombinant Secondary Antibody (H+L) (RGAR005)(red), or 0.25 ug Rabbit IgG Isotype Control Recombinant Antibody (98136-1-RR, Clone: 240953C9) (blue). Cells were fixed with 4% PFA and permeabilized with Flow Cytometry Perm Buffer (PF00011-C).