

For Research Use Only

CD21/CD35 Recombinant antibody

Catalog Number: 84565-2-RR



Basic Information

| | | |
|--------------------------------------|------------------------------------------------|------------------------------------------------------------------------|
| Catalog Number: 84565-2-RR | GenBank Accession Number: AAA37448.1 | Purification Method: Protein A purification |
| Concentration: 1000 µg/ml | GeneID (NCBI): 12902 | CloneNo.: 241957E6 |
| Source: Rabbit | UNIPROT ID: P19070 | Recommended Dilutions: WB 1:5000-1:50000 IHC 1:500-1:2000 |
| Isotype: IgG | Full Name: complement receptor 2 | |
| | Calculated MW: 113kDa | |
| | Observed MW: 160-210 kDa | |

Applications

Tested Applications:
WB, IHC, ELISA

Species Specificity:
mouse, rat

Note-IHC: suggested antigen retrieval with TE buffer pH 9.0; (*) Alternatively, antigen retrieval may be performed with citrate buffer pH 6.0

Positive Controls:

WB: A20 cells, mouse spleen tissue, rat spleen tissue

IHC: mouse spleen tissue,

Background Information

CD21, also known as complement receptor type 2 (CR2), complement C3d receptor, and Epstein-Barr virus receptor, is a transmembrane protein that contains a small cytoplasmic domain, a transmembrane region and an extracellular domain consisting of 15 short consensus repeats (SCRs) (PMID: 6230668; 2551147). CD21 binds complement fragments C3d, C3dg and iC3b and acts as a receptor for the Epstein-Barr virus (PMID: 7753047). CD35, also known as complement receptor type 1 (CR1) or C3b/C4b receptor, binds C3b and C4b. The murine Cr2 gene encodes for both CD21 and CD35 (PMID: 2139460; 19559484). Mouse CD35 comprises 21 SCRs while mouse CD21 is identical to mouse CD35 except that it lacks the first 6 SCRs. CD21/CD35 forms trimolecular complexes with CD19 and CD81 and plays roles in the regulation of humoral immune responses (PMID: 11043778).

Storage

Storage:
Store at -20°C. Stable for one year after shipment.
Storage Buffer:
PBS with 0.02% sodium azide and 50% glycerol pH 7.3.
Aliquoting is unnecessary for -20°C storage

For technical support and original validation data for this product please contact:

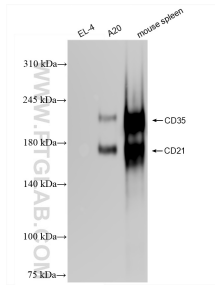
T: 4006900926

E: Proteintech-CN@ptglab.com

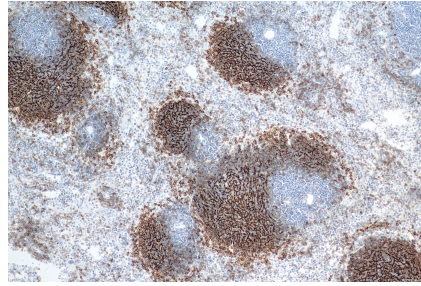
W: ptgcn.com

This product is exclusively available under Proteintech Group brand and is not available to purchase from any other manufacturer.

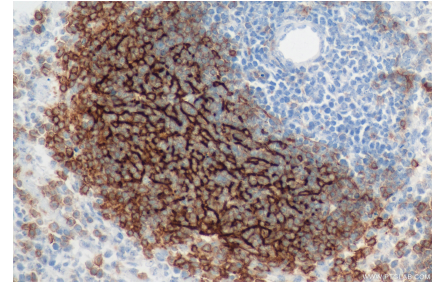
Selected Validation Data



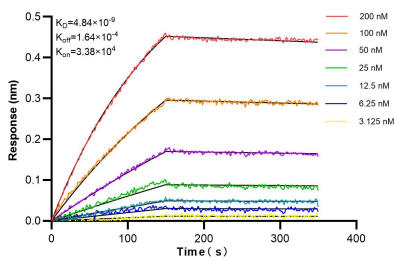
Various lysates were subjected to SDS PAGE followed by western blot with 84565-2-RR (CD21 antibody) at dilution of 1:20000 incubated at room temperature for 1.5 hours.



Immunohistochemical analysis of paraffin-embedded mouse spleen tissue slide using 84565-2-RR (CD21 antibody) at dilution of 1:1000 (under 10x lens). Heat mediated antigen retrieval with Tris-EDTA buffer (pH 9.0).



Immunohistochemical analysis of paraffin-embedded mouse spleen tissue slide using 84565-2-RR (CD21 antibody) at dilution of 1:1000 (under 40x lens). Heat mediated antigen retrieval with Tris-EDTA buffer (pH 9.0).



Biolayer interferometry (BLI) kinetic assays of 84565-2-RR against Mouse CD21/CD35 were performed. The affinity constant is 4.84 nM.