

For Research Use Only

CTRL Recombinant antibody, PBS Only (Capture)

Catalog Number: 84572-2-PBS



Basic Information

Catalog Number:

84572-2-PBS

Size:

1 mg/ml

Source:

Rabbit

Isotype:

IgG

GenBank Accession Number:

BC063475

GeneID (NCBI):

1506

UNIPROT ID:

P40313

Full Name:

chymotrypsin-like

Calculated MW:

28 kDa

Purification Method:

Protein A purification

CloneNo.:

241858C9

Applications

Tested Applications:

Cytometric bead array, Sandwich ELISA, Indirect ELISA,
Sample test

Species Specificity:

human

Background Information

Storage

Storage:

Store at -80°C.

The product is shipped with ice packs. Upon receipt, store it immediately at -80°C

Storage Buffer:

PBS Only

For technical support and original validation data for this product please contact:

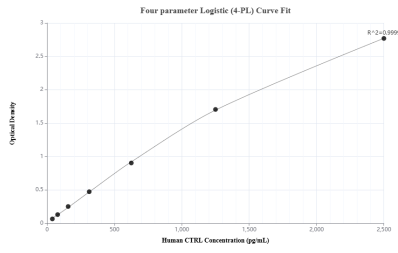
T: 4006900926

E: Proteintech-CN@ptglab.com

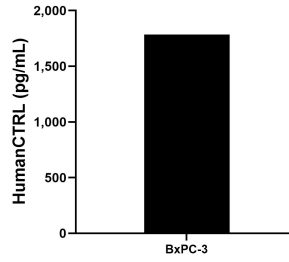
W: ptgcn.com

This product is exclusively available under Proteintech Group brand and is not available to purchase from any other manufacturer.

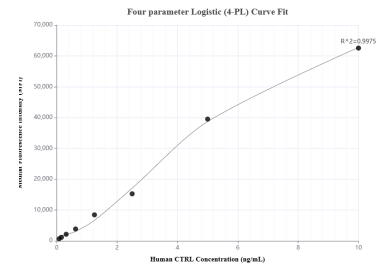
Selected Validation Data



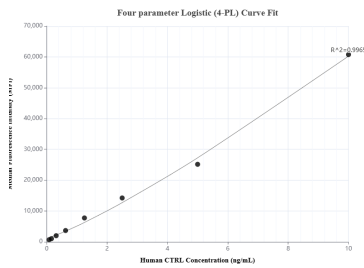
Sandwich ELISA standard curve of MP01410-1, Human CTRL Recombinant Matched Antibody Pair - PBS only. 84572-2-PBS was coated to a plate as the capture antibody and incubated with serial dilutions of standard Eg2214. 84572-1-PBS was HRP conjugated as the detection antibody. Range: 39.1-2500 pg/mL



The mean CTRL concentration was determined to be 1,784.3 pg/mL in BxPC-3 cell extract based on a 5.9 mg/mL extract load.



Cytometric bead array standard curve of MP01410-1, CTRL Recombinant Matched Antibody Pair, PBS Only. Capture antibody: 84572-2-PBS. Detection antibody: 84572-1-PBS. Standard: Eg2214. Range: 0.078-10 ng/mL



Cytometric bead array standard curve of MP01410-2, CTRL Recombinant Matched Antibody Pair, PBS Only. Capture antibody: 84572-2-PBS. Detection antibody: 84572-3-PBS. Standard: Eg2214. Range: 0.078-10 ng/mL