

For Research Use Only

MDH1 Recombinant antibody, PBS Only (Capture/Detector)

Catalog Number: 84576-1-PBS



Basic Information

Catalog Number: 84576-1-PBS	GenBank Accession Number: BC001484	Purification Method: Protein A purification
Size: 1 mg/ml	GeneID (NCBI): 4190	CloneNo.: 241887C5
Source: Rabbit	UNIPROT ID: P40925	
Isotype: IgG	Full Name: malate dehydrogenase 1, NAD (soluble)	
Immunogen Catalog Number: AG8744	Calculated MW: 334 aa, 36 kDa	

Applications

Tested Applications:
Cytometric bead array, Sandwich ELISA, Indirect ELISA,
Sample test

Species Specificity:
human

Background Information

Storage

Storage:
Store at -80°C.
The product is shipped with ice packs. Upon receipt, store it immediately at -80°C

Storage Buffer:
PBS Only

For technical support and original validation data for this product please contact:

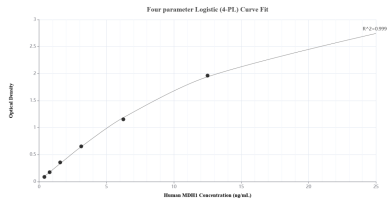
T: 4006900926

E: Proteintech-CN@ptglab.com

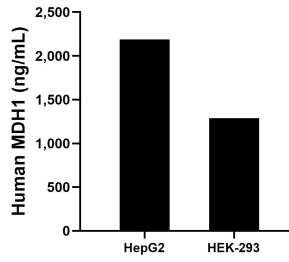
W: ptgcn.com

This product is exclusively available under Proteintech Group brand and is not available to purchase from any other manufacturer.

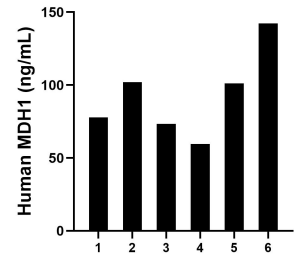
Selected Validation Data



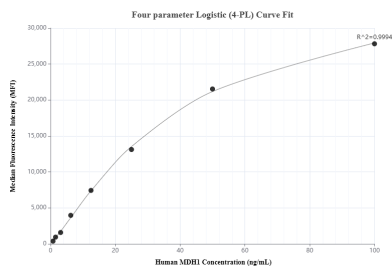
Sandwich ELISA standard curve of MP01422-2, Human MDH1 Recombinant Matched Antibody Pair - PBS only. 84576-1-PBS was coated to a plate as the capture antibody and incubated with serial dilutions of standard Ag8744. 84576-2-PBS was HRP conjugated as the detection antibody. Range: 0.391-25 ng/mL



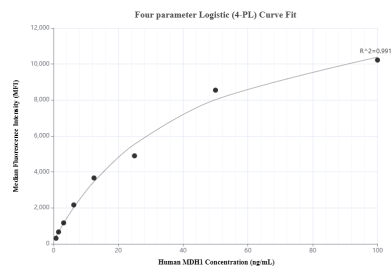
The mean MDH1 concentration was determined to be 2187.75 ng/mL in HepG2 cell extract based on a 2.30 mg/mL extract load and 1287.87 ng/mL in HEK-293 cell extract based on a 1.50 mg/mL extract load.



Serum of six individual healthy human donors was measured. The MDH1 concentration of detected samples was determined to be 92.63 ng/mL with a range of 59.50-142.37 ng/mL



Cytometric bead array standard curve of MP01422-1, MDH1 Recombinant Matched Antibody Pair, PBS Only. Capture antibody: 84576-3-PBS. Detection antibody: 84576-1-PBS. Standard: Ag8744. Range: 0.781-100 ng/mL



Cytometric bead array standard curve of MP01422-2, MDH1 Recombinant Matched Antibody Pair, PBS Only. Capture antibody: 84576-1-PBS. Detection antibody: 84576-2-PBS. Standard: Ag8744. Range: 0.781-100 ng/mL