

For Research Use Only

# MDH1 Recombinant antibody, PBS Only (Detector)

Catalog Number: 84576-2-PBS



## Basic Information

<b>Catalog Number:</b> 84576-2-PBS	<b>GenBank Accession Number:</b> BC001484	<b>Purification Method:</b> Protein A purification
<b>Size:</b> 1 mg/ml	<b>GeneID (NCBI):</b> 4190	<b>CloneNo.:</b> 241887D8
<b>Source:</b> Rabbit	<b>UNIPROT ID:</b> P40925	
<b>Isotype:</b> IgG	<b>Full Name:</b> malate dehydrogenase 1, NAD (soluble)	
<b>Immunogen Catalog Number:</b> AG8744	<b>Calculated MW:</b> 334 aa, 36 kDa	

## Applications

**Tested Applications:**  
Cytometric bead array, Sandwich ELISA, Indirect ELISA,  
Sample test

**Species Specificity:**  
human

## Background Information

### Storage

**Storage:**  
Store at -80°C.  
**The product is shipped with ice packs. Upon receipt, store it immediately at -80°C**

**Storage Buffer:**  
PBS Only

For technical support and original validation data for this product please contact:

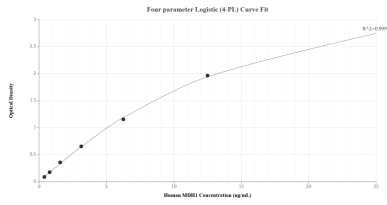
T: 4006900926

E: [Proteintech-CN@ptglab.com](mailto:Proteintech-CN@ptglab.com)

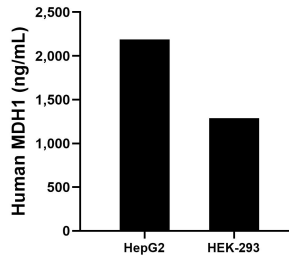
W: [ptgcn.com](http://ptgcn.com)

**This product is exclusively available under Proteintech Group brand and is not available to purchase from any other manufacturer.**

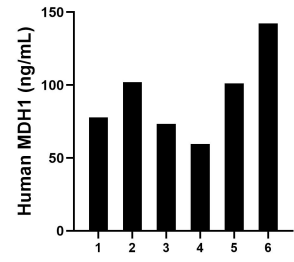
## Selected Validation Data



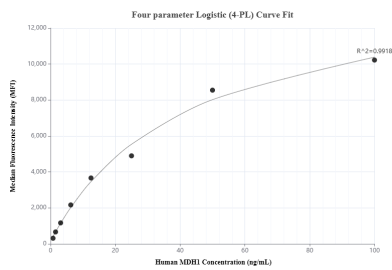
Sandwich ELISA standard curve of MP01422-2, Human MDH1 Recombinant Matched Antibody Pair - PBS only. 84576-1-PBS was coated to a plate as the capture antibody and incubated with serial dilutions of standard Ag8744. 84576-2-PBS was HRP conjugated as the detection antibody. Range: 0.391-25 ng/mL



The mean MDH1 concentration was determined to be 2187.75 ng/mL in HepG2 cell extract based on a 2.30 mg/mL extract load and 1287.87 ng/mL in HEK-293 cell extract based on a 1.50 mg/mL extract load.



Serum of six individual healthy human donors was measured. The MDH1 concentration of detected samples was determined to be 92.63 ng/mL with a range of 59.50-142.37 ng/mL



Cytometric bead array standard curve of MP01422-2, MDH1 Recombinant Matched Antibody Pair, PBS Only. Capture antibody: 84576-1-PBS. Detection antibody: 84576-2-PBS. Standard: Ag8744. Range: 0.781-100 ng/mL