

For Research Use Only

# TRAF2 Recombinant antibody

Catalog Number: 84581-3-RR



## Basic Information

<b>Catalog Number:</b> 84581-3-RR	<b>GenBank Accession Number:</b> BC032410	<b>Purification Method:</b> Protein A purification
<b>Size:</b> 1000 µg/ml	<b>GeneID (NCBI):</b> 7186	<b>CloneNo.:</b> 241899A2
<b>Source:</b> Rabbit	<b>UNIPROT ID:</b> Q12933	<b>Recommended Dilutions:</b> WB 1:2000-1:10000 IF/ICC 1:125-1:500
<b>Isotype:</b> IgG	<b>Full Name:</b> TNF receptor-associated factor 2	
<b>Immunogen Catalog Number:</b> AG25387	<b>Calculated MW:</b> 56 kDa	
	<b>Observed MW:</b> 53 kDa	

## Applications

<b>Tested Applications:</b> WB, IF/ICC, ELISA	<b>Positive Controls:</b>
<b>Species Specificity:</b> human, mouse	<b>WB :</b> HeLa cells, HEK-293T cells, HepG2 cells, MOLT-4 cells, NIH/3T3 cells, C2C12 cells
	<b>IF/ICC :</b> HeLa cells,

## Background Information

Tumor necrosis factor (TNF) receptor-associated factor-2 (TRAF2) is one of the members of the TRAF superfamily protein, which is an intracellular junction protein with E3 ligase activity. TRAF2 mediates and regulates the activation of nuclear factor kappa B (NF- $\kappa$ B) and microtubule-associated protein kinase (MAPK) signaling pathways by binding to TNFR family proteins. Recent studies have demonstrated that TRAF2 regulates tumor progression by through multiple pathways.

## Storage

**Storage:**  
Store at -20°C. Stable for one year after shipment.  
**Storage Buffer:**  
PBS with 0.02% sodium azide and 50% glycerol pH 7.3.  
**Aliquoting is unnecessary for -20°C storage**

For technical support and original validation data for this product please contact:

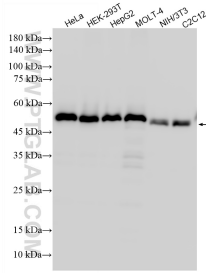
T: 4006900926

E: [Proteintech-CN@ptglab.com](mailto:Proteintech-CN@ptglab.com)

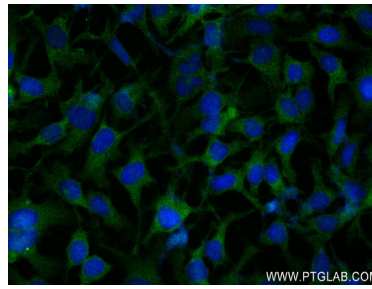
W: [ptgcn.com](http://ptgcn.com)

**This product is exclusively available under Proteintech Group brand and is not available to purchase from any other manufacturer.**

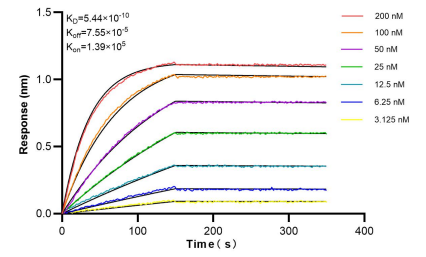
## Selected Validation Data



Various lysates were subjected to SDS PAGE followed by western blot with 84581-3-RR (TRAF2 antibody) at dilution of 1:5000 incubated at room temperature for 1.5 hours.



Immunofluorescent analysis of (-20°C Ethanol) fixed HeLa cells using TRAF2 antibody (84581-3-RR, Clone: 241899A2) at dilution of 1:250 and CoraLite®488-Conjugated Goat Anti-Rabbit IgG(H+L) (SA00013-2).



Bioluminescence Interferometry (BLI) kinetic assays of 84581-3-RR against Human TRAF2 were performed. The affinity constant is 0.544 nM.