

For Research Use Only

# BAP31 Recombinant antibody, PBS Only

Catalog Number: 84584-5-PBS



## Basic Information

<b>Catalog Number:</b> 84584-5-PBS	<b>GenBank Accession Number:</b> BC014323	<b>Purification Method:</b> Protein A purification
<b>Size:</b> 1 mg/ml	<b>GeneID (NCBI):</b> 10134	<b>CloneNo.:</b> 241978D10
<b>Source:</b> Rabbit	<b>UNIPROT ID:</b> P51572	
<b>Isotype:</b> IgG	<b>Full Name:</b> B-cell receptor-associated protein 31	
<b>Immunogen Catalog Number:</b> AG1668	<b>Calculated MW:</b> 28 kDa	
	<b>Observed MW:</b> 28 kDa	

## Applications

**Tested Applications:**  
WB, IF/ICC, Indirect ELISA

**Species Specificity:**  
human, mouse, rat

## Background Information

BAP31, also known as BCAP31, is a chaperone protein that is abundant in the endoplasmic reticulum (ER). BAP31 plays a role in the export of secreted proteins in the ER, the recognition of abnormally folded protein, and their targeting to the ER associated-degradation (ERAD). It also serves as a cargo receptor for the export of transmembrane proteins. BAP31 may be involved in apoptosis.

## Storage

**Storage:**  
Store at -80°C.  
**The product is shipped with ice packs. Upon receipt, store it immediately at -80°C**

**Storage Buffer:**  
PBS Only

For technical support and original validation data for this product please contact:

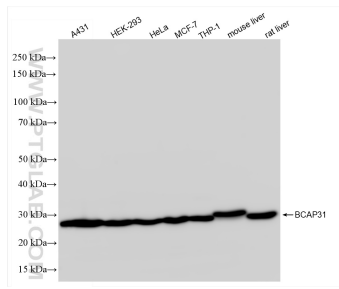
T: 4006900926

E: [Proteintech-CN@ptglab.com](mailto:Proteintech-CN@ptglab.com)

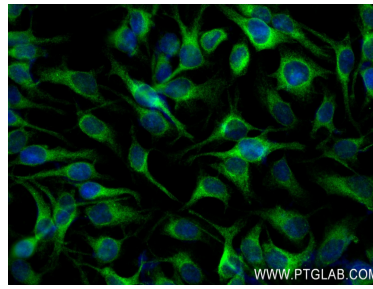
W: [ptgcn.com](http://ptgcn.com)

**This product is exclusively available under Proteintech Group brand and is not available to purchase from any other manufacturer.**

## Selected Validation Data



Various lysates were subjected to SDS PAGE followed by western blot with 84584-5-RR (BAP31 antibody) at dilution of 1:10000 incubated at room temperature for 1.5 hours. This data was developed using the same antibody clone with 84584-5-PBS in a different storage buffer formulation.



Immunofluorescent analysis of (4% PFA) fixed HeLa cells using BAP31 antibody (84584-5-RR, Clone: 241978D10) at dilution of 1:400 and CoraLite® 488-Conjugated Goat Anti-Rabbit IgG(H+L) (SA00013-2). This data was developed using the same antibody clone with 84584-5-PBS in a different storage buffer formulation.