

For Research Use Only

BAP31 Recombinant antibody

Catalog Number:84584-5-RR



Basic Information

Catalog Number: 84584-5-RR	GenBank Accession Number: BC014323	Purification Method: Protein A purification
Size: 1000 µg/ml	GeneID (NCBI): 10134	CloneNo.: 241978D10
Source: Rabbit	UNIPROT ID: P51572	Recommended Dilutions: WB 1:5000-1:50000 IF/ICC 1:200-1:800
Isotype: IgG	Full Name: B-cell receptor-associated protein 31	
Immunogen Catalog Number: AG1668	Calculated MW: 28 kDa	
	Observed MW: 28 kDa	

Applications

Tested Applications: WB, IF/ICC, ELISA	Positive Controls:
Species Specificity: human, mouse, rat	WB : A431 cells, HEK-293 cells, HeLa cells, MCF-7 cells, THP-1 cells, mouse liver tissue, rat liver tissue
	IF/ICC : HeLa cells,

Background Information

BAP31, also known as BCAP31, is a chaperone protein that is abundant in the endoplasmic reticulum (ER). BAP31 plays a role in the export of secreted proteins in the ER, the recognition of abnormally folded protein, and their targeting to the ER associated-degradation (ERAD). It also serves as a cargo receptor for the export of transmembrane proteins. BAP31 may be involved in apoptosis.

Storage

Storage:
Store at -20°C. Stable for one year after shipment.
Storage Buffer:
PBS with 0.02% sodium azide and 50% glycerol pH 7.3.
Aliquoting is unnecessary for -20°C storage

For technical support and original validation data for this product please contact:

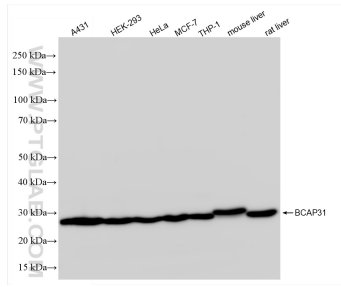
T: 4006900926

E: Proteintech-CN@ptglab.com

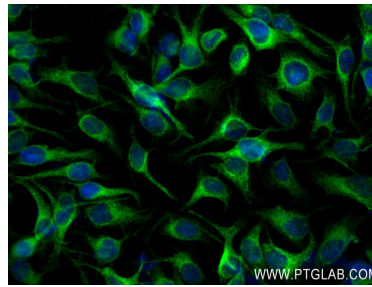
W: ptgcn.com

This product is exclusively available under Proteintech Group brand and is not available to purchase from any other manufacturer.

Selected Validation Data



Various lysates were subjected to SDS PAGE followed by western blot with 84584-5-RR (BAP31 antibody) at dilution of 1:10000 incubated at room temperature for 1.5 hours.



Immunofluorescent analysis of (4% PFA) fixed HeLa cells using BAP31 antibody (84584-5-RR, Clone: 241978D10) at dilution of 1:400 and CoraLite®488-Conjugated Goat Anti-Rabbit IgG(H+L) (SA00013-2).