

For Research Use Only

# MAN1B1 Recombinant antibody, PBS Only

Catalog Number: 84588-1-PBS



## Basic Information

Catalog Number:

84588-1-PBS

Size:

1 mg/ml

Source:

Rabbit

Isotype:

IgG

Immunogen Catalog Number:

AG28302

GenBank Accession Number:

BC002953

GeneID (NCBI):

11253

UNIPROT ID:

Q9UKM7

Full Name:

mannosidase, alpha, class 1B, member 1

Calculated MW:

80 kDa

Observed MW:

80 kDa

Purification Method:

Protein A purification

CloneNo.:

241817E10

## Applications

Tested Applications:

WB, FC (Intra), Indirect ELISA

Species Specificity:

human

## Background Information

MAN1B1, also known as ERMAN1, MANA-ER, belongs to the glycosyl hydrolase 47 family. MAN1B1 is involved in glycoprotein quality control targeting of misfolded glycoproteins for degradation, specifically converting Man9GlcNAc to Man8GlcNAc isomer B. At high enzyme concentrations, it further trims the carbohydrates to Man5-6GlcNAc2 (PMID: 18003979). Mutations in MAN1B1 cause autosomal-recessive intellectual disability. This gene has been associated with Rafiq syndrome (PMID: 21763484).

## Storage

Storage:

Store at -80°C.

The product is shipped with ice packs. Upon receipt, store it immediately at -80°C

Storage Buffer:

PBS Only

For technical support and original validation data for this product please contact:

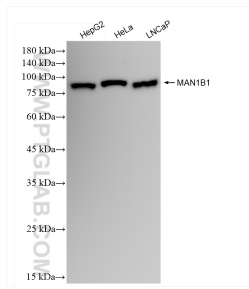
T: 4006900926

E: [Proteintech-CN@ptglab.com](mailto:Proteintech-CN@ptglab.com)

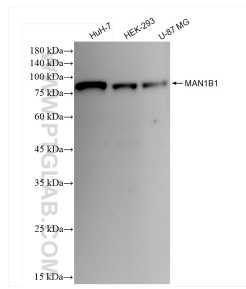
W: [ptgcn.com](http://ptgcn.com)

This product is exclusively available under Proteintech Group brand and is not available to purchase from any other manufacturer.

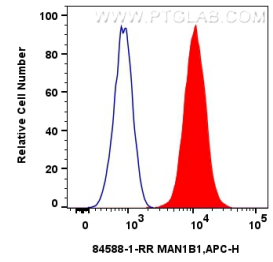
## Selected Validation Data



Various lysates were subjected to SDS PAGE followed by western blot with 84588-1-RR (MAN1B1 antibody) at dilution of 1:5000 incubated at room temperature for 1.5 hours. This data was developed using the same antibody clone with 84588-1-PBS in a different storage buffer formulation.



Various lysates were subjected to SDS PAGE followed by western blot with 84588-1-RR (MAN1B1 antibody) at dilution of 1:5000 incubated at room temperature for 1.5 hours. This data was developed using the same antibody clone with 84588-1-PBS in a different storage buffer formulation.



$1 \times 10^6$  U2OS cells were intracellularly stained with 0.2 ug MAN1B1 Recombinant antibody (84588-1-RR, Clone:241817E10) and Multi-rAb CoraLite® Plus 647-Goat Anti-Rabbit Recombinant Secondary Antibody (H+L) (RGAR005)(red), or 0.2 ug Rabbit IgG Isotype Control Recombinant Antibody (98136-1-RR, Clone: 240953C9) (blue). Cells were fixed with 4% PFA and permeabilized with Flow Cytometry Perm Buffer (PF00011-C). This data was developed using the same

