

For Research Use Only

RHBDL2 Recombinant antibody

Catalog Number: 84589-1-RR



Basic Information

Catalog Number: 84589-1-RR	GenBank Accession Number: BC013103	Purification Method: Protein A purification
Size: 1000 ug/ml	GeneID (NCBI): 54933	CloneNo.: 240446D11
Source: Rabbit	UNIPROT ID: Q9NX52	Recommended Dilutions: WB 1:500-1:2000
Isotype: IgG	Full Name: rhomboid, veinlet-like 2 (Drosophila)	
Immunogen Catalog Number: AG3142	Calculated MW: 303 aa, 34 kDa	
	Observed MW: 34-37 kDa	

Applications

Tested Applications: WB, ELISA	Positive Controls: WB : HEK-293 cells, MCF-7 cells, HeLa cells
Species Specificity: human	

Background Information

Storage

Storage:
Store at -20°C. Stable for one year after shipment.
Storage Buffer:
PBS with 0.02% sodium azide and 50% glycerol pH 7.3.
Aliquoting is unnecessary for -20°C storage

For technical support and original validation data for this product please contact:

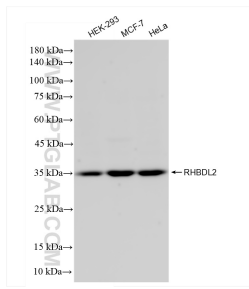
T: 4006900926

E: Proteintech-CN@ptglab.com

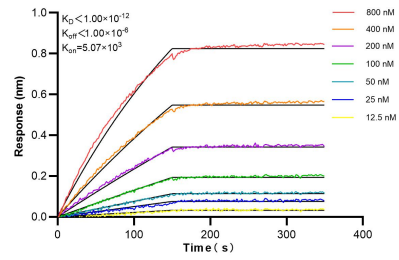
W: ptgcn.com

This product is exclusively available under Proteintech Group brand and is not available to purchase from any other manufacturer.

Selected Validation Data



Various lysates were subjected to SDS PAGE followed by western blot with 84589-1-RR (RHBDL2 antibody) at dilution of 1:1000 incubated at room temperature for 1.5 hours.



Biolayer interferometry (BLI) kinetic assays of 84589-1-RR against Human RHBDL2 were performed. The affinity constant is below 1 pM.