

For Research Use Only

CD46 Recombinant antibody, PBS Only (Detector)

Catalog Number: 84599-6-PBS



Basic Information

Catalog Number:

84599-6-PBS

Size:

1 mg/ml

Source:

Rabbit

Isotype:

IgG

GenBank Accession Number:

NM_172351.3

GeneID (NCBI):

4179

UNIPROT ID:

P15529-11

Full Name:

CD46 molecule, complement
regulatory protein

Calculated MW:

42kDa

Purification Method:

Protein A purification

CloneNo.:

241764E1

Applications

Tested Applications:

Sandwich ELISA, Indirect ELISA, Sample test

Species Specificity:

human

Background Information

Storage

Storage:

Store at -80°C.

The product is shipped with ice packs. Upon receipt, store it immediately at -80°C

Storage Buffer:

PBS Only

For technical support and original validation data for this product please contact:

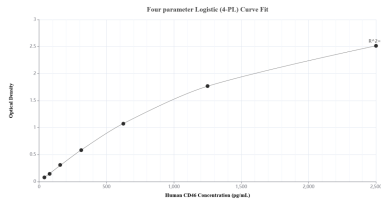
T: 4006900926

E: Proteintech-CN@ptglab.com

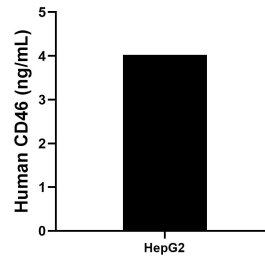
W: ptgcn.com

This product is exclusively available under Proteintech Group brand and is not available to purchase from any other manufacturer.

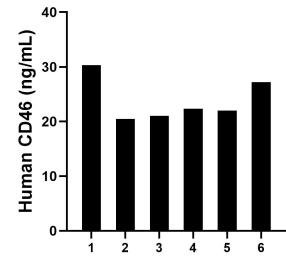
Selected Validation Data



Sandwich ELISA standard curve of MP01445-3, Human CD46 Recombinant Matched Antibody Pair - PBS only. 84599-1-PBS was coated to a plate as the capture antibody and incubated with serial dilutions of standard Eg1770. 84599-6-PBS was HRP conjugated as the detection antibody. Range: 39.1-2500 pg/mL



HepG2 cells were cultured in DMEM supplemented with 10% fetal bovine serum, 2.5 mM L-glutamine, 100 U/mL penicillin, and 100 μ g/mL streptomycin sulfate. An aliquot of the cell culture supernatant was removed, assayed for human CD46, and measured 4.0 ng/mL



Serum of six individual healthy human donors was measured. The CD46 concentration of detected samples was determined to be 23.9 ng/mL with a range of 20.5-30.3 ng/mL