

# EGF Recombinant antibody

Catalog Number: 84601-1-RR

## Basic Information

Catalog Number: 84601-1-RR	GenBank Accession Number: NM_010113	Purification Method: Protein A purification
Concentration: 1000 µg/ml	GeneID (NCBI): 13645	CloneNo.: 242000B1
Source: Rabbit	UNIPROT ID: P01132	Recommended Dilutions: WB: 1:1000-1:4000 IHC: 1:50-1:500 IF-P: 1:50-1:500
Isotype: IgG	Full Name: epidermal growth factor	
Immunogen Catalog Number: EG1965	Calculated MW: 133 kDa Observed MW: 150 kDa	

## Applications

Tested Applications: WB, IHC, IF-P, ELISA	Positive Controls:
Species Specificity: mouse	WB : mouse kidney tissue, IHC : mouse kidney tissue, IF-P : mouse kidney tissue,
<b>Note-IHC: suggested antigen retrieval with TE buffer pH 9.0; (*) Alternatively, antigen retrieval may be performed with citrate buffer pH 6.0</b>	

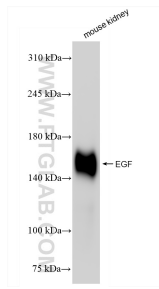
## Background Information

Epidermal Growth Factor (EGF) is a type of mitogenic factor that stimulates the proliferation of various cells, including epithelial cells and fibroblasts. It is a small peptide composed of 53 amino acids with a molecular weight of approximately 6,000 Daltons. EGF contains three disulfide bonds, which contribute to its stability under acidic and high-temperature conditions. Human EGF is synthesized as transmembrane precursor proteins (1207 amino acids), which are proteolytically cleaved to generate the 54 amino acid mature EGF. EGF plays a crucial role in regulating cell growth, proliferation, and differentiation. When EGF binds to its receptor (EGFR), it activates intracellular signaling pathways that lead to DNA synthesis and cell proliferation. EGF is naturally present in various tissues and body fluids, including saliva, urine, and milk. It is primarily synthesized in the submandibular glands and duodenum.

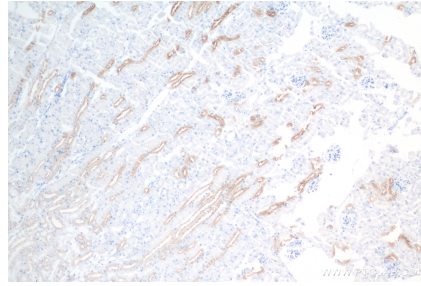
## Storage

Storage:  
Store at -20°C. Stable for one year after shipment.  
Storage Buffer:  
PBS with 0.02% sodium azide and 50% glycerol, pH7.3  
Aliquoting is unnecessary for -20°C storage

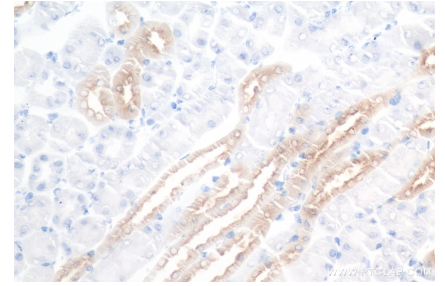
## Selected Validation Data



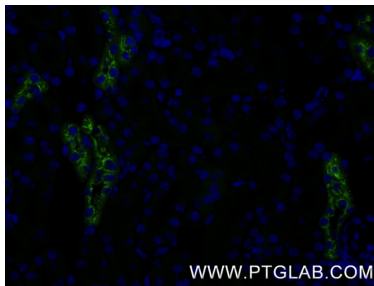
mouse kidney tissue were subjected to SDS PAGE followed by western blot with 84601-1-RR (EGF antibody) at dilution of 1:2000 incubated at room temperature for 1.5 hours.



Immunohistochemical analysis of paraffin-embedded mouse kidney tissue slide using 84601-1-RR (EGF antibody) at dilution of 1:200 (under 10x lens). Heat mediated antigen retrieval with Tris-EDTA buffer (pH 9.0).



Immunohistochemical analysis of paraffin-embedded mouse kidney tissue slide using 84601-1-RR (EGF antibody) at dilution of 1:200 (under 40x lens). Heat mediated antigen retrieval with Tris-EDTA buffer (pH 9.0).



Immunofluorescent analysis of (4% PFA) fixed paraffin-embedded mouse kidney tissue using EGF antibody (84601-1-RR, Clone: 242000B1) at dilution of 1:200 and Coralite® 488-Conjugated Goat Anti-Rabbit IgG(H+L) (SA00013-2). Heat mediated antigen retrieval with Tris-EDTA buffer (pH 9.0).