

For Research Use Only

DPP4 Recombinant antibody, PBS Only (Capture)

Catalog Number: 84606-5-PBS



Basic Information

Catalog Number: 84606-5-PBS	GenBank Accession Number: BC013329	Purification Method: Protein A purification
Size: 1 mg/ml	GeneID (NCBI): 1803	CloneNo.: 242045D10
Source: Rabbit	UNIPROT ID: P27487	
Isotype: IgG	Full Name: dipeptidyl-peptidase 4	
	Calculated MW: 88 kDa	

Applications

Tested Applications:
Sandwich ELISA, Indirect ELISA, Sample test

Species Specificity:
human

Background Information

Storage

Storage:
Store at -80°C.
The product is shipped with ice packs. Upon receipt, store it immediately at -80°C

Storage Buffer:
PBS Only

For technical support and original validation data for this product please contact:

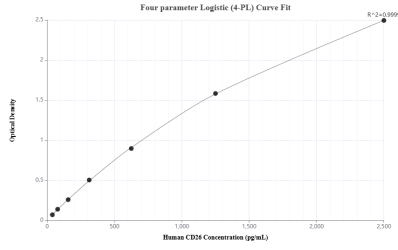
T: 4006900926

E: Proteintech-CN@ptglab.com

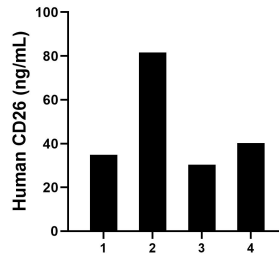
W: ptgcn.com

This product is exclusively available under Proteintech Group brand and is not available to purchase from any other manufacturer.

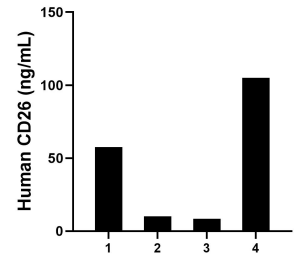
Selected Validation Data



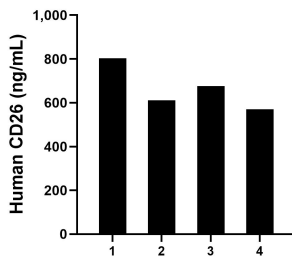
Sandwich ELISA standard curve of MP01439-3, Human CD26 Recombinant Matched Antibody Pair - PBS only. 84606-5-PBS was coated to a plate as the capture antibody and incubated with serial dilutions of standard Eg0157. 84606-4-PBS was HRP conjugated as the detection antibody. Range: 39.1-2500 pg/mL



Saliva of four individual healthy human donors was measured. The human CD26 concentration of detected samples was determined to be 46.73 ng/mL with a range of 30.36 - 81.55 ng/mL



Urine of four individual healthy human donors was measured. The human CD26 concentration of detected samples was determined to be 45.25 ng/mL with a range of 8.4 - 104.93 ng/mL



Serum of four individual healthy human donors was measured. The human CD26 concentration of detected samples was determined to be 665.25 ng/mL with a range of 570.16 - 803.43 ng/mL