

For Research Use Only

# INTS6 Recombinant monoclonal antibody

Catalog Number: 84610-1-RR

Featured Product



## Basic Information

Catalog Number:

84610-1-RR

Source:

Rabbit

Isotype:

IgG

Immunogen Catalog Number:

AG36146

GenBank Accession Number:

BC039829

GeneID (NCBI):

26512

UNIPROT ID:

Q9UL03

Full Name:

integrator complex subunit 6

Calculated MW:

100 kDa

Observed MW:

130 kDa

Purification Method:

Protein A purification

CloneNo.:

242099C7

Recommended Dilutions:

WB: 1:1000-1:8000

IF/ICC: 1:250-1:1000

## Applications

Tested Applications:

WB, IF/ICC, ELISA

Species Specificity:

human

Positive Controls:

WB : PC-3 cells, MCF-7 cells, DU 145 cells, HuH-7 cells

IF/ICC : HeLa cells,

## Background Information

INTS6 is a component of the Integrator (INT) complex, a complex involved in the small nuclear RNAs (snRNA) U1 and U2 transcription and in their 3'-box-dependent processing.

## Storage

Storage:

Store at -20°C. Stable for one year after shipment.

Storage Buffer:

PBS with 0.02% sodium azide and 50% glycerol, pH7.3

Aliquoting is unnecessary for -20°C storage

For technical support and original validation data for this product please contact:

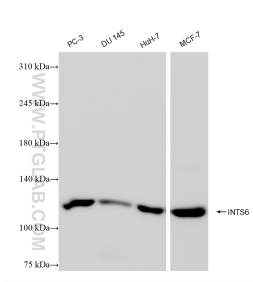
T: 4006900926

E: [Proteintech-CN@ptglab.com](mailto:Proteintech-CN@ptglab.com)

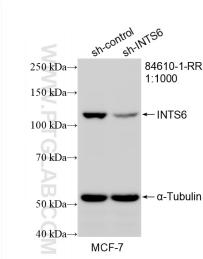
W: [ptgcn.com](http://ptgcn.com)

This product is exclusively available under Proteintech Group brand and is not available to purchase from any other manufacturer.

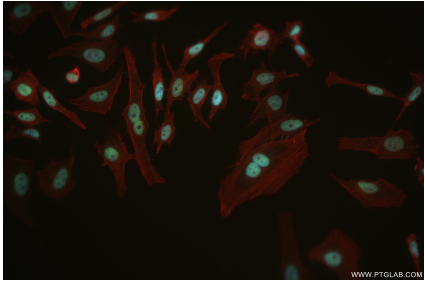
Selected Validation Data



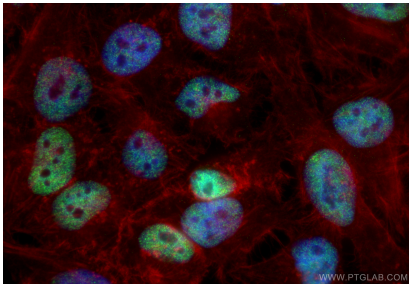
Various lysates were subjected to SDS PAGE followed by western blot with 84610-1-RR (INTS6 antibody) at dilution of 1:4000 incubated at room temperature for 1.5 hours.



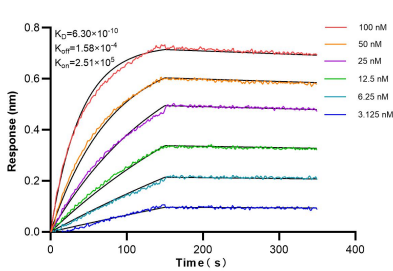
WB result of INTS6 antibody (84610-1-RR; 1:1000; incubated at room temperature for 1.5 hours) with sh-Control and sh-INTS6 transfected MCF-7 cells.



Immunofluorescent analysis of (4% PFA) fixed HeLa cells using INTS6 antibody (84610-1-RR, Clone: 242099C7) at dilution of 1:500 and CoraLite®488-Conjugated Goat Anti-Rabbit IgG(H+L) (SA00013-2), CL594-Phalloidin (red).



Immunofluorescent analysis of (4% PFA) fixed HeLa cells using INTS6 antibody (84610-1-RR, Clone: 242099C7) at dilution of 1:1000 and CoraLite®488-Conjugated Goat Anti-Rabbit IgG(H+L) (SA00013-2).



Biolayer interferometry (BLI) kinetic assays of 84610-1-RR against Human INTS6 were performed. The affinity constant is 0.63 nM.