

For Research Use Only

PDP1 Recombinant antibody

Catalog Number:84612-3-RR



Basic Information

Catalog Number:

84612-3-RR

Size:

1000 ug/ml

Source:

Rabbit

Isotype:

IgG

Immunogen Catalog Number:

AG15453

GenBank Accession Number:

BC047619

GeneID (NCBI):

54704

UNIPROT ID:

Q9P0J1

Full Name:

protein phosphatase 2C, magnesium-dependent, catalytic subunit

Calculated MW:

537 aa, 61 kDa

Observed MW:

55-61 kDa

Purification Method:

Protein A purification

CloneNo.:

242090E7

Recommended Dilutions:

WB 1:5000-1:50000

Applications

Tested Applications:

WB, ELISA

Species Specificity:

human, mouse

Positive Controls:

WB : MDA-MB-231 cells, PC-3 cells, U-87 MG cells, mouse skeletal muscle tissue, mouse heart tissue

Background Information

Pyruvate dehydrogenase phosphatase 1 (PDP1), also known as PPM2C, is a key hormone-regulated metabolic enzyme that dephosphorylates and activates pyruvate dehydrogenase (PDH), thereby stimulating the conversion of pyruvate into acetyl-CoA (PMID: 36453802). PDP1 expression is regulated by FLT3-ITD in a context-dependent manner, and that it is centrally involved in the adaptation of AML glucose metabolism to the requirements of proliferation, survival and the therapeutic response to FLT3 inhibition (PMID: 37935978).

Storage

Storage:

Store at -20°C. Stable for one year after shipment.

Storage Buffer:

PBS with 0.02% sodium azide and 50% glycerol pH 7.3.

Aliquoting is unnecessary for -20°C storage

For technical support and original validation data for this product please contact:

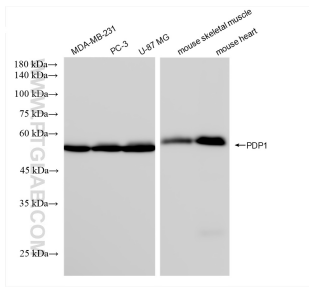
T: 4006900926

E: Proteintech-CN@ptglab.com

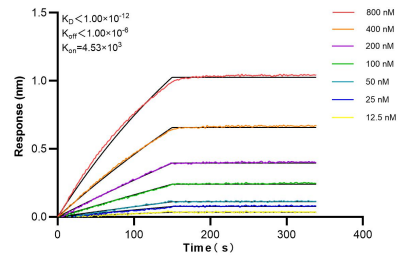
W: ptgcn.com

This product is exclusively available under Proteintech Group brand and is not available to purchase from any other manufacturer.

Selected Validation Data



Various lysates were subjected to SDS PAGE followed by western blot with 84612-3-RR (PDP1 antibody) at dilution of 1:10000 incubated at room temperature for 1.5 hours.



Biolayer interferometry (BLI) kinetic assays of 84612-3-RR against Human PDP1 were performed. The affinity constant is below 1 pM.