

For Research Use Only

SETD5 Recombinant antibody, PBS Only (Detector)

Catalog Number: 84622-1-PBS



Basic Information

Catalog Number:

84622-1-PBS

Size:

1 mg/ml

Source:

Rabbit

Isotype:

IgG

Immunogen Catalog Number:

AG28929

GenBank Accession Number:

BC020956

GeneID (NCBI):

55209

UNIPROT ID:

Q9COA6

Full Name:

SET domain containing 5

Purification Method:

Protein A purification

CloneNo.:

241903A3

Applications

Tested Applications:

IF/ICC, Cytometric bead array, Indirect ELISA

Species Specificity:

human

Background Information

SETD5, also known as KIAA1757, is a member of the histone lysine methyltransferase family. It has 3 isoforms and is involved in a variety of cellular functions, including cell cycle regulation and cell proliferation, and has a potential role in early embryonic development (PMID: 36875494).

Storage

Storage:

Store at -80°C.

The product is shipped with ice packs. Upon receipt, store it immediately at -80°C

Storage Buffer:

PBS Only

For technical support and original validation data for this product please contact:

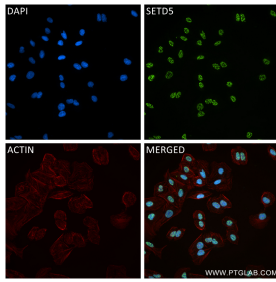
T: 4006900926

E: Proteintech-CN@ptglab.com

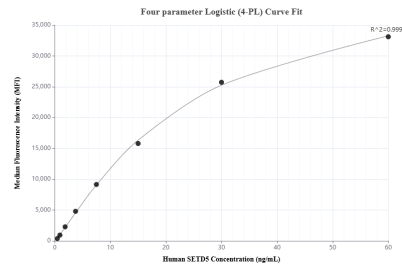
W: ptgcn.com

This product is exclusively available under Proteintech Group brand and is not available to purchase from any other manufacturer.

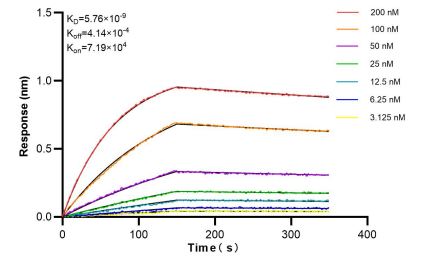
Selected Validation Data



Immunofluorescent analysis of (4% PFA) fixed U2OS cells using SETD5 antibody (84622-1-RR, Clone: 241903A3) at dilution of 1:400 and CoraLite@488-Conjugated Goat Anti-Rabbit IgG(H+L) (SA00013-2), CL594-Phalloidin (red). This data was developed using the same antibody clone with 84622-1-PBS in a different storage buffer formulation.



Cytometric bead array standard curve of MP01432-1, SETD5 Recombinant Matched Antibody Pair, PBS Only. Capture antibody: 84622-2-PBS. Detection antibody: 84622-1-PBS. Standard: Ag28929. Range: 0.469-60 ng/mL.



Bi-layer interferometry (BLI) kinetic assays of 84622-1-RR against Human SETD5 were performed. The affinity constant is 5.76 nM.