

For Research Use Only

SETD5 Recombinant antibody

Catalog Number: 84622-4-RR



Basic Information

Catalog Number:

84622-4-RR

Size:

1000 µg/ml

Source:

Rabbit

Isotype:

IgG

Immunogen Catalog Number:

AG28929

GenBank Accession Number:

BC020956

GeneID (NCBI):

55209

UNIPROT ID:

Q9C0A6

Full Name:

SET domain containing 5

Observed MW:

160-220 kDa

Purification Method:

Protein A purification

CloneNo.:

241903D4

Recommended Dilutions:

WB 1:500-1:2000

Applications

Tested Applications:

WB, ELISA

Species Specificity:

human

Positive Controls:

WB : SH-SY5Y cells, HEK-293T cells, HeLa cells

Background Information

SETD5, also known as KIAA1757, is a member of the histone lysine methyltransferase family. It has 3 isoforms and is involved in a variety of cellular functions, including cell cycle regulation and cell proliferation, and has a potential role in early embryonic development (PMID: 36875494).

Storage

Storage:

Store at -20°C. Stable for one year after shipment.

Storage Buffer:

PBS with 0.02% sodium azide and 50% glycerol pH 7.3.

Aliquoting is unnecessary for -20°C storage

For technical support and original validation data for this product please contact:

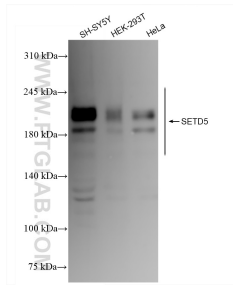
T: 4006900926

E: Proteintech-CN@ptglab.com

W: ptgcn.com

This product is exclusively available under Proteintech Group brand and is not available to purchase from any other manufacturer.

Selected Validation Data



Various lysates were subjected to SDS PAGE followed by western blot with 84622-4-RR (SETD5 antibody) at dilution of 1:1000 incubated at room temperature for 1.5 hours.