

For Research Use Only

# GPAA1 Recombinant antibody

Catalog Number: 84632-1-RR



## Basic Information

<b>Catalog Number:</b> 84632-1-RR	<b>GenBank Accession Number:</b> BC004129	<b>Purification Method:</b> Protein A purification
<b>Size:</b> 1000 µg/ml	<b>GeneID (NCBI):</b> 8733	<b>CloneNo.:</b> 241591C4
<b>Source:</b> Rabbit	<b>UNIPROT ID:</b> O43292	<b>Recommended Dilutions:</b> WB 1:5000-1:50000
<b>Isotype:</b> IgG	<b>Full Name:</b> glycosylphosphatidylinositol anchor attachment protein 1 homolog (yeast)	
<b>Immunogen Catalog Number:</b> AG0152	<b>Calculated MW:</b> 68 kDa	
	<b>Observed MW:</b> 60-68 kDa	

## Applications

<b>Tested Applications:</b> WB, ELISA	<b>Positive Controls:</b> WB : MKN-45 cells, HeLa cells, HepG2 cells, HuH-7 cells
<b>Species Specificity:</b> human	

## Background Information

GPAA1(Glycosylphosphatidylinositol anchor attachment 1 protein) is also named as GAA1. It is the most conspicuously hydrophobic of the known subunits of GPIT, and it may play a key role in substrate recognition. It is predicted to be a multispreading membrane protein of 67 kDa with seven transmembrane (TM) domains, a large luminal domain between the first two TM segments, and a cytoplasmically oriented N terminus bearing a potential ER retrieval signal in the form of a diarginine motif(PMID:12052837).

## Storage

**Storage:**  
Store at -20°C. Stable for one year after shipment.  
**Storage Buffer:**  
PBS with 0.02% sodium azide and 50% glycerol pH 7.3.  
Aliquoting is unnecessary for -20°C storage

For technical support and original validation data for this product please contact:

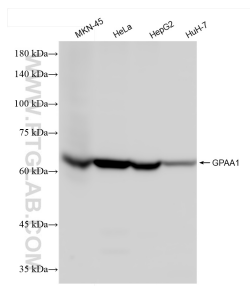
T: 4006900926

E: [Proteintech-CN@ptglab.com](mailto:Proteintech-CN@ptglab.com)

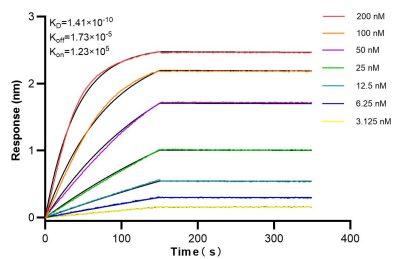
W: [ptgcn.com](http://ptgcn.com)

**This product is exclusively available under Proteintech Group brand and is not available to purchase from any other manufacturer.**

## Selected Validation Data



Various lysates were subjected to SDS PAGE followed by western blot with 84632-1-RR (GPAA1 antibody) at dilution of 1:10000 incubated at room temperature for 1.5 hours.



Biolayer interferometry (BLI) kinetic assays of 84632-1-RR against Human GPAA1 were performed. The affinity constant is 0.141 nM.