

For Research Use Only

IGF2 Recombinant antibody

Catalog Number: 84643-1-RR



Basic Information

Catalog Number: 84643-1-RR	GenBank Accession Number: GeneID (NCBI): 3481	Purification Method: Protein A purification
Size: 1000 ug/ml	UNIPROT ID: P01344	CloneNo.: 241746D3
Source: Rabbit	Full Name: insulin-like growth factor 2 (somatomedin A)	Recommended Dilutions: WB 1:1000-1:4000
Isotype: IgG	Observed MW: 20 kDa	
Immunogen Catalog Number: HZ-1161		

Applications

Tested Applications: WB, ELISA	Positive Controls: WB : HuH-7 cells,
Species Specificity: human	

Background Information

Insulin-like growth factor 2 (IGF2) is a crucial protein that plays a significant role in regulating growth, particularly during normal fetal development, and is also often dysregulated during tumorigenesis. IGF2 is one of the main ligands of the type 1 IGF receptor (IGF-1R), a tyrosine kinase receptor that transmits signals upon binding with IGF-II. IGF2 is predominantly secreted via the placenta during pregnancy and, after birth, primarily by hepatocytes, with its secretion being independent of growth hormone (GH) secretion, unlike IGF-I.

Storage

Storage:
Store at -20°C. Stable for one year after shipment.
Storage Buffer:
PBS with 0.02% sodium azide and 50% glycerol pH 7.3.
Aliquoting is unnecessary for -20°C storage

For technical support and original validation data for this product please contact:

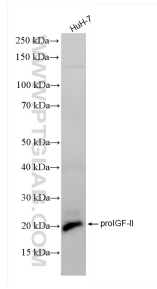
T: 4006900926

E: Proteintech-CN@ptglab.com

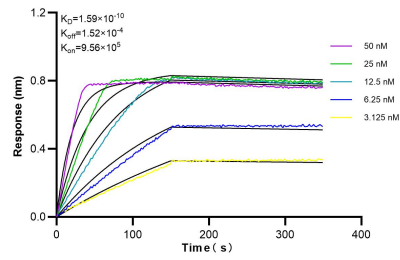
W: ptgcn.com

This product is exclusively available under Proteintech Group brand and is not available to purchase from any other manufacturer.

Selected Validation Data



HuH-7 cells were subjected to SDS PAGE followed by western blot with 84643-1-RR (IGF2 antibody) at dilution of 1:2000 incubated at room temperature for 1.5 hours.



Biacore sensorgram showing the binding of Human IGF2 to 84643-1-RR. The affinity constant is 0.159 nM.