

For Research Use Only

# RXRB Recombinant antibody, PBS Only (Capture/Detector)

Catalog Number: 84656-2-PBS



## Basic Information

Catalog Number: 84656-2-PBS	GenBank Accession Number: BC001167	Purification Method: Protein A purification
Size: 1 mg/ml	GeneID (NCBI): 6257	CloneNo.: 242178D6
Source: Rabbit	UNIPROT ID: P28702	
Isotype: IgG	Full Name: retinoid X receptor, beta	
Immunogen Catalog Number: AG0263	Calculated MW: 57 kDa	

## Applications

**Tested Applications:**  
Cytometric bead array, Sandwich ELISA, Indirect ELISA,  
Sample test

**Species Specificity:**  
human

## Background Information

### Storage

**Storage:**  
Store at -80°C.  
**The product is shipped with ice packs. Upon receipt, store it immediately at -80°C**

**Storage Buffer:**  
PBS Only

For technical support and original validation data for this product please contact:

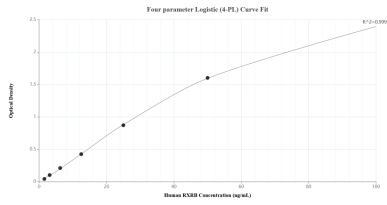
T: 4006900926

E: Proteintech-CN@ptglab.com

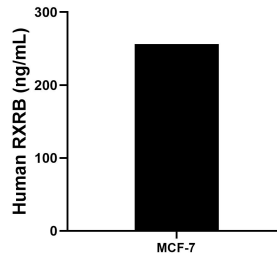
W: ptgcn.com

**This product is exclusively available under Proteintech Group brand and is not available to purchase from any other manufacturer.**

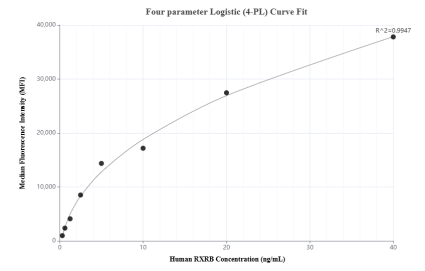
## Selected Validation Data



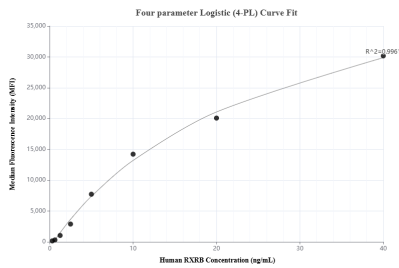
Sandwich ELISA standard curve of MP01484-2, Human RXRB Recombinant Matched Antibody Pair - PBS only. 84656-2-PBS was coated to a plate as the capture antibody and incubated with serial dilutions of standard Ag0263. 84656-1-PBS was HRP conjugated as the detection antibody. Range: 1.56-100 ng/mL



The mean RXRB concentration was determined to be 256.21 ng/mL in MCF-7 cell extract based on a 1.20 mg/mL extract load.



Cytometric bead array standard curve of MP01484-1, RXRB Recombinant Matched Antibody Pair, PBS Only. Capture antibody: 84656-3-PBS. Detection antibody: 84656-2-PBS. Standard: Ag0263. Range: 0.313-40 ng/mL



Cytometric bead array standard curve of MP01484-2, RXRB Recombinant Matched Antibody Pair, PBS Only. Capture antibody: 84656-2-PBS. Detection antibody: 84656-1-PBS. Standard: Ag0263. Range: 0.313-40 ng/mL