

For Research Use Only

# PSPC1 Recombinant antibody

Catalog Number: 84657-4-RR



## Basic Information

<b>Catalog Number:</b> 84657-4-RR	<b>GenBank Accession Number:</b> BC014184	<b>Purification Method:</b> Protein A purification
<b>Size:</b> 1000 µg/ml	<b>GeneID (NCBI):</b> 55269	<b>CloneNo.:</b> 242158G7
<b>Source:</b> Rabbit	<b>UNIPROT ID:</b> Q8WXF1	<b>Recommended Dilutions:</b> WB 1:5000-1:50000
<b>Isotype:</b> IgG	<b>Full Name:</b> paraspeckle component 1	
<b>Immunogen Catalog Number:</b> AG10136	<b>Calculated MW:</b> 523 aa, 59 kDa	
	<b>Observed MW:</b> 66 kDa	

## Applications

<b>Tested Applications:</b> WB, ELISA	<b>Positive Controls:</b> WB : HEK-293 cells, HepG2 cells, HeLa cells, PC-3 cells, MDA-MB-453 cells
<b>Species Specificity:</b> human	

## Background Information

PSPC1 (paraspeckle component 1), a known paraspeckle biomarker, is a putative transcription factor that belongs to the Drosophila behavior/human splicing (DBHS) family. PSPC1 was recently identified as a contextual determinant of tumor progression in multiple cancer types involving oncogenic reprogramming to switch proapoptotic TGF- $\beta$  to prometastatic TGF- $\beta$  via hijacking of Smad2/3 targeting. Upregulated PSPC1 is correlated with advanced tumor stages and poor survival of patients with breast, lung, and liver cancers. Upregulated PSPC1 potentiates expression of mesenchymal markers, EMT transcription factors (EMT-TF), cancer stem-like cell transcription factors (CSC-TF), and c-Myc-related proliferation genes, thus promoting migration, invasion, spheroid formation, tumor formation, and metastasis.

## Storage

**Storage:**  
Store at -20°C. Stable for one year after shipment.  
**Storage Buffer:**  
PBS with 0.02% sodium azide and 50% glycerol pH 7.3.  
Aliquoting is unnecessary for -20°C storage

For technical support and original validation data for this product please contact:

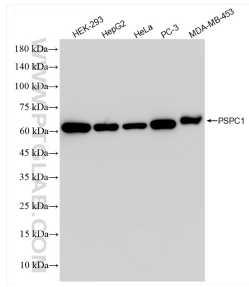
T: 4006900926

E: [Proteintech-CN@ptglab.com](mailto:Proteintech-CN@ptglab.com)

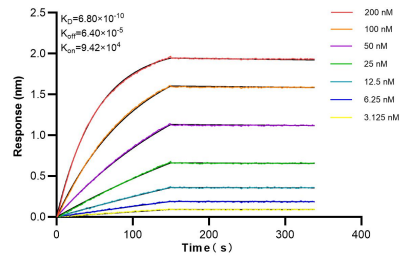
W: [ptgcn.com](http://ptgcn.com)

This product is exclusively available under Proteintech Group brand and is not available to purchase from any other manufacturer.

## Selected Validation Data



Various lysates were subjected to SDS PAGE followed by western blot with 84657-4-RR (PSPC1 antibody) at dilution of 1:10000 incubated at room temperature for 1.5 hours.



Biolayer interferometry (BLI) kinetic assays of 84657-4-RR against Human PSC1 were performed. The affinity constant is 0.68 nM.