

For Research Use Only

PSPC1 Recombinant antibody

Catalog Number:84657-5-RR



Basic Information

Catalog Number:

84657-5-RR

Size:

1000 μ g/ml

Source:

Rabbit

Isotype:

IgG

Immunogen Catalog Number:

AG10136

GenBank Accession Number:

BC014184

GeneID (NCBI):

55269

UNIPROT ID:

Q8WXF1

Full Name:

paraspeckle component 1

Calculated MW:

523 aa, 59 kDa

Purification Method:

Protein A purification

CloneNo.:

242158C1

Recommended Dilutions:

IF/ICC 1:500-1:2000

Applications

Tested Applications:

IF/ICC, ELISA

Species Specificity:

human

Positive Controls:

IF/ICC : HepG2 cells,

Background Information

Storage

Storage:

Store at -20°C. Stable for one year after shipment.

Storage Buffer:

PBS with 0.02% sodium azide and 50% glycerol pH 7.3.

Aliquoting is unnecessary for -20°C storage

For technical support and original validation data for this product please contact:

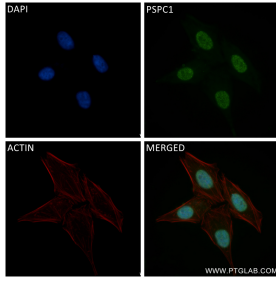
T: 4006900926

E: Proteintech-CN@ptglab.com

W: ptgcn.com

This product is exclusively available under Proteintech Group brand and is not available to purchase from any other manufacturer.

Selected Validation Data



Immunofluorescent analysis of (4% PFA) fixed HepG2 cells using PSpC1 antibody (84657-5-RR, Clone: 242158C1) at dilution of 1:1000 and CoraLite®488-Conjugated Goat Anti-Rabbit IgG(H+L) (SA00013-2), CL594-Phalloidin (red).